

Fitting Instructions



SKU

T7TA44

PRODUCT

**TAG Heavy Duty Towbar
for Toyota Corolla Hatch E210
08/18-on.**

SPECIFICATIONS

- Towbar Class: CL 4 Heavy Duty
- Towing Capacity: 1300kg
- Tow ball Weight: 130kg
- Approx. Fitment Time: 60 Minutes



Scan for latest
version of these
instructions

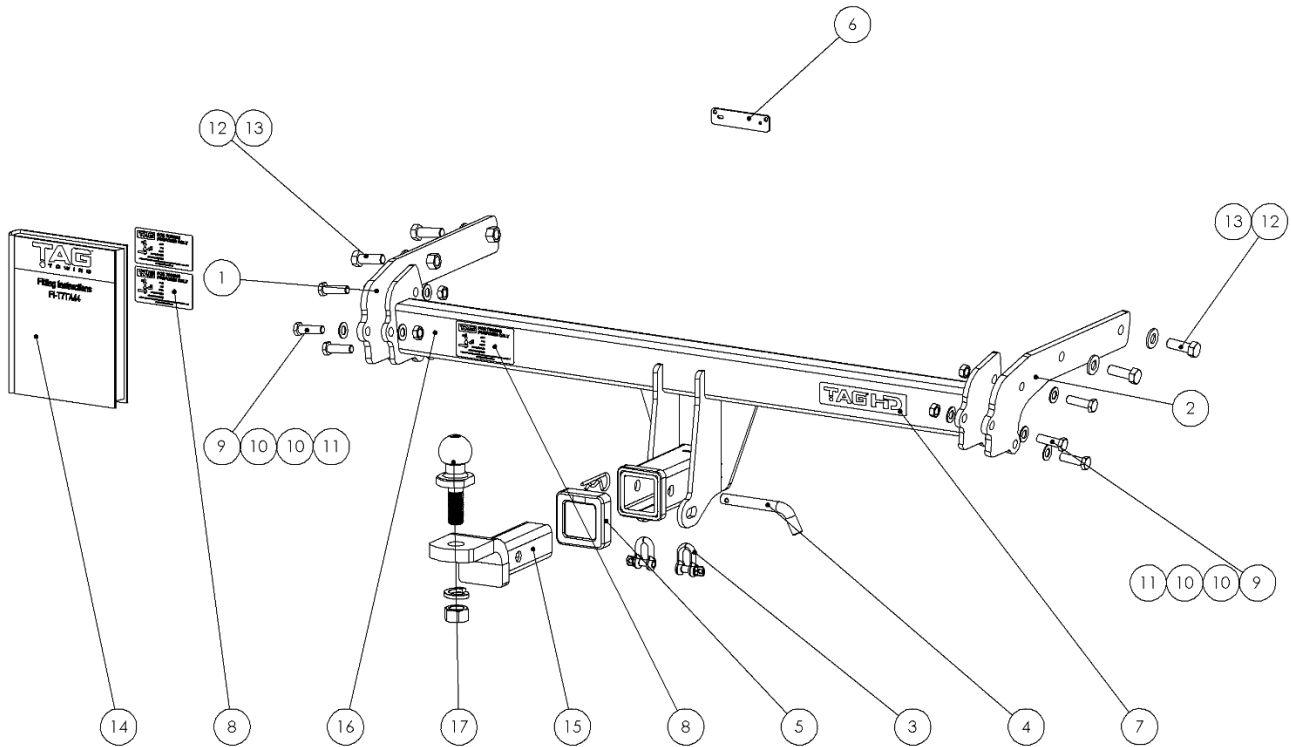
TOOLS REQUIRED

- Spanners ●#
- Sockets ●#
- Air Saw or similar.
- Trim Removal Tool *
- Torque Wrench
- Screwdriver ⊗

IN THIS GUIDE

- Fitment Instructions
- Torque Settings
- Warranty Info

Towbar Assembly



Item No.	Description	QTY.	Item No.	Description	QTY.
1	End Plate Assembly PS	1	10	M12 Flat Washer	12
2	End Plate Assembly DS	1	11	M12x1.25 Nut	6
3	D-Shackle - 10mm. 1000kg	2	12	M14 x 1.5 x 40 Set Screw	4
4	Class 4 Pin & Clip	1	13	M14 Flat Washer	4
5	TAG Hitch Cover	1	14	Fitting Instruction	1
6	Backing Plate - 7 Pin Flat Connector	1	15	Ball Mount L4150	1
7	TAG HD Sticker 150 x 33mm	1	16	Weld Assembly T7TA44	1
8	Compliance Label	3	17	50mm TAG Tow Ball - Chrome	1
9	M12 x 1.25 x 40 Bolt	6			

Important Information



**ENSURE THAT THE FITTING INSTRUCTIONS ARE READ AND UNDERSTOOD PRIOR TO FITMENT
PLACE THESE INSTRUCTIONS IN THE VEHICLE'S GLOVEBOX AFTER INSTALLATION IS COMPLETED**

Warning:

- This product is for towing purposes only and must only be loaded as shown in your vehicle Owner's Manual.
- This towbar is NOT to be drilled, cut, welded, or modified in any way.
- All load ratings shown are under the assumption your trailer has a functional braking system.
- When installed in positions other than the one shown in these instructions the Tow Ball/ Tow Ball Mount may interfere or obstruct certain features of your vehicle (tailgate opening, Chassis clearance, Sensor Operation, etc.)

General:

- Before fitting this towbar check installation hardware is included and correct.
- Check that the towbar is suitable for the vehicle make, model and year then make sure any changes to the vehicle design do not conflict with the fitting of this towbar. (Tray, Canopy, Suspension etc.)
- Check behind chassis rail and body panels before drilling to ensure no hazards are present (fuel lines, electrical wires etc.)
- After drilling, blow any filings clear, remove any swarf in and around the area and treat exposed metal with a suitable rust inhibitor.
- If this vehicle requires a bumper cut out, please check to make sure that your measurements are correct and clear before cutting any panels as some bumper profiles can change. If you are not sure, please ask your towbar supplier.
- To ensure the towbar is safe and secure, it is the owners' responsibility that each fastener is torqued **at 1000km intervals**. If for any reason, a fastener is not suitable for re-torquing, it is the owners' responsibility to replace it to ensure it is of the same grade (8.8) and class as the original. Failure to do so will diminish the towing capacity of the towbar and may result in the deterioration of the chassis of the vehicle. Contact an authorised TAG distributor or the TAG fitment centre if further information is required.

Towbar Maintenance and Care:

It is recommended, when not in use, the Tow Ball Mount assembly and class 4 Pin and Clip is stored inside the car away from moisture to prevent standing water from forming rust. Inspect to ensure, on regular basis, fasteners are torqued to the specifications below and in good condition.

<i>Metric Bolt Torque Settings</i>										
Diameter	Pitch	Grade	Torque	Unit		Diameter	Pitch	Grade	Torque	Unit
M8	1.25	8.8	29	Nm		M12	1.25	10.9	125	Nm
M10	1.25	8.8	57	Nm		M12	1.50	10.9	105	Nm
M10	1.50	8.8	44	Nm		M14	1.25	10.9	195	Nm
M12	1.25	8.8	101	Nm		M14	1.50	10.9	165	Nm
M12	1.50	8.8	97	Nm		M16	1.25	10.9	295	Nm
M12	1.75	8.8	77	Nm		M16	1.50	10.9	250	Nm
M14	2.00	8.8	122	Nm		50mm Tow Ball	N/A	N/A	300	Nm
M16	2.00	8.8	190	Nm		70mm Tow Ball	N/A	N/A	750	Nm

Installation Instructions



Step 1: Remove Rear Bumper

- a. Lift the tailgate.

Remove the cover from the taillight assembly & remove the lower hex screw fastening the bumper. Repeat on opposite side. ⊗/●10

- b. Inside the wheel arch, remove 1x small scrivet from the very top, fastening the bumper to the body. Repeat on opposite side. *

- c. Remove 2x hex head screws from the mudflap (if fitted) at the bottom. ⊗/●10



- d. On the underside of the bumper directly behind the wheel arch, remove 1x scrivet and 1x hex head screw. Repeat on opposite side. ⊗/●10.

- e. Remove 4x scrivets along the bottom side of the bumper at the rear. Repeat on opposite side. *



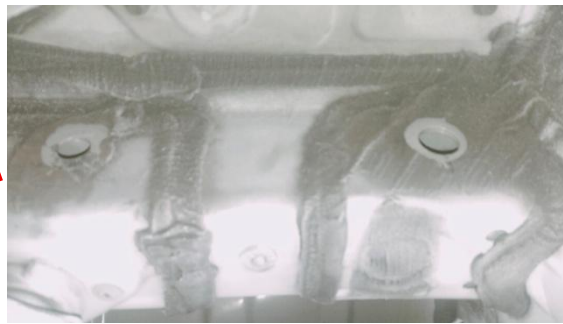
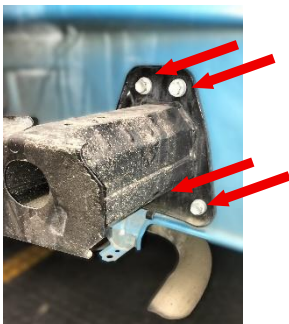
- f. Beginning at each wheel arch gently unclip bumper from body and remove.

- g. Disconnect the bumper harness from the top of the crash bar on PS.

- h. Set bumper aside.

- i. Remove the crash bar via 4x M8 nuts per side. Discard the crash bar & fasteners. ●12

- j. Using a flat blade, carefully remove the sound deadener from the outside of the chassis to reveal plastic stickers covering the mounting holes. Remove the coverings and any extra deadener around the holes. Repeat on opposite side.



Step 2: Fit Towbar

- a. Insert the endplates into the opening of the rear panel and align with the holes in the side of the chassis. Loosely fasten with 2 x M14 x 1.5 x 40 bolts with flat washers. Repeat on opposite side. ●21.



- b. Lift the main bar up to the inside of both endplates and loosely secure with 3x M12 x 1.25 x 40 bolts **per side**. ●18. NOTE: Due to the tapered ends, it is suggested to insert the main bar between the end plates from the top down.

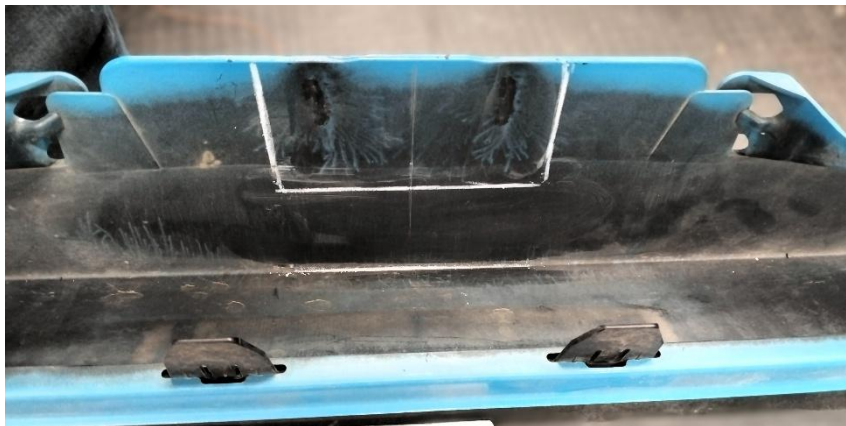


- c. Beginning at the chassis, tighten all fasteners to the torque specification on page 3.

Step 3: Cut Bumper

Note: The towbar installer is ultimately responsible for the location & quality of the bumper cut. To avoid mistakes, please use the following measurements as a guide only. We suggest making small incremental cuts and regularly test fit the bumper to ensure an accurate and tidy appearance. The additional application of rubber pinch-weld around the cut edge ensures a neat & tidy look.

- a. Establish the centre of the bumper.
- b. Mark the cut-out 90mm wide x 50mm deep from the bottom lip of the bumper. See the diagram.
- c. Cut the bumper using an air hacksaw or other suitable cutting device.
- d. De-burr all cut edges.
- e. Refit bumper in reverse of steps 1a-l.

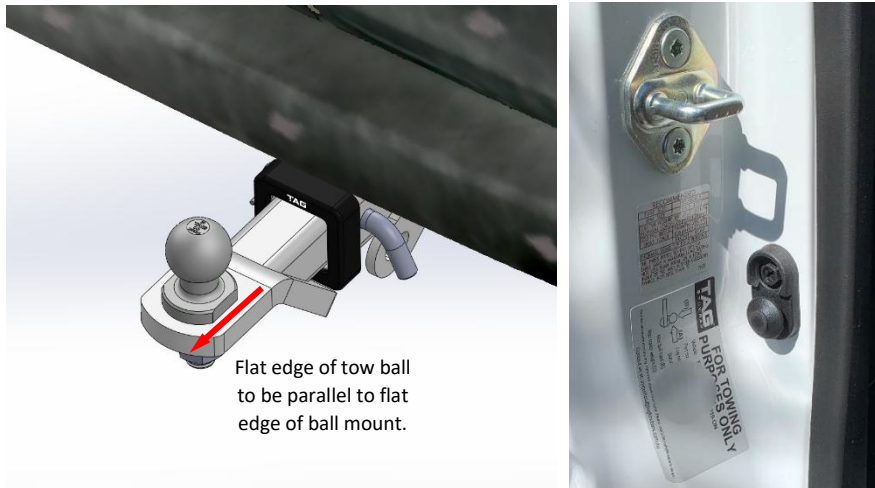


Installation Instructions



Step 4: Complete Towbar & Apply Spare Compliance Label

- a. Attach TAG Hitch cover with rubber mallet carefully to prevent breaking.
- b. Attach the tow ball to the ball mount. The flat side of the tow ball **MUST BE** parallel to the outer edge of the ball mount. **Tighten the tow ball to 300Nm.**
- c. Insert the Tow Ball Mount into the receiver and secure with the Pull pin and R-Clip. When not in use, secure the Ball Mount in a safe place inside your vehicle.
- d. Apply one of the compliance labels to the pillar of the driver's door. Place the remaining label and the fitting instructions in the vehicle handbook.



TAG Warranty Statement



SWD warrants your TAG Towbar for its full product life under the following conditions:

- You can show proof of purchase.
- The towbar has been correctly installed by a suitably qualified installer.
- The towbar has not been modified or abused in any way and has only been used for the purpose intended.
- The towbar was not fitted second hand to your vehicle.

The extent of this warranty includes materials and workmanship used in the manufacture of the towbar and is to the equivalent value of current, full replacement cost.

Nothing stated or implied in this warranty limits in any way, the statutory rights that you may have.

To make a claim visit the original installer in the first instance or, if you are unable to or are not satisfied with their help, then contact us direct by phone on 1300 669122 or visit www.swd.com.au.