

Fitting Instructions



SKU

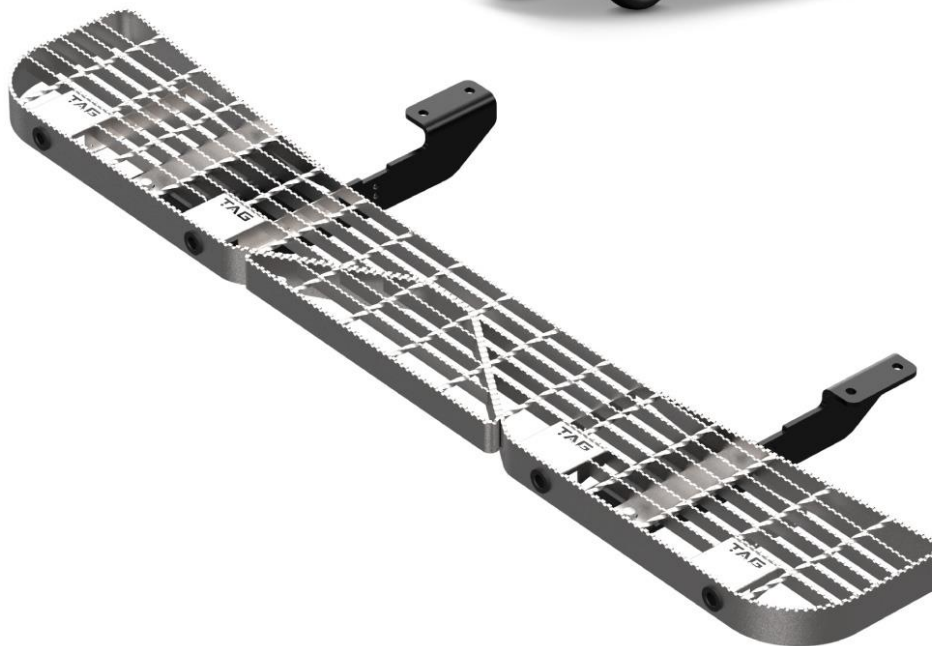
TSPA16

PRODUCT

**TAG Rear Step for LDV Deliver 9
(07/2020 – On)**

SPECIFICATIONS

- Towbar Class: Step
- Towing Capacity: N/A
- Tow ball Weight: N/A
- Approx. Fitment Time: 30 Minutes



Scan for latest
version of these
instructions

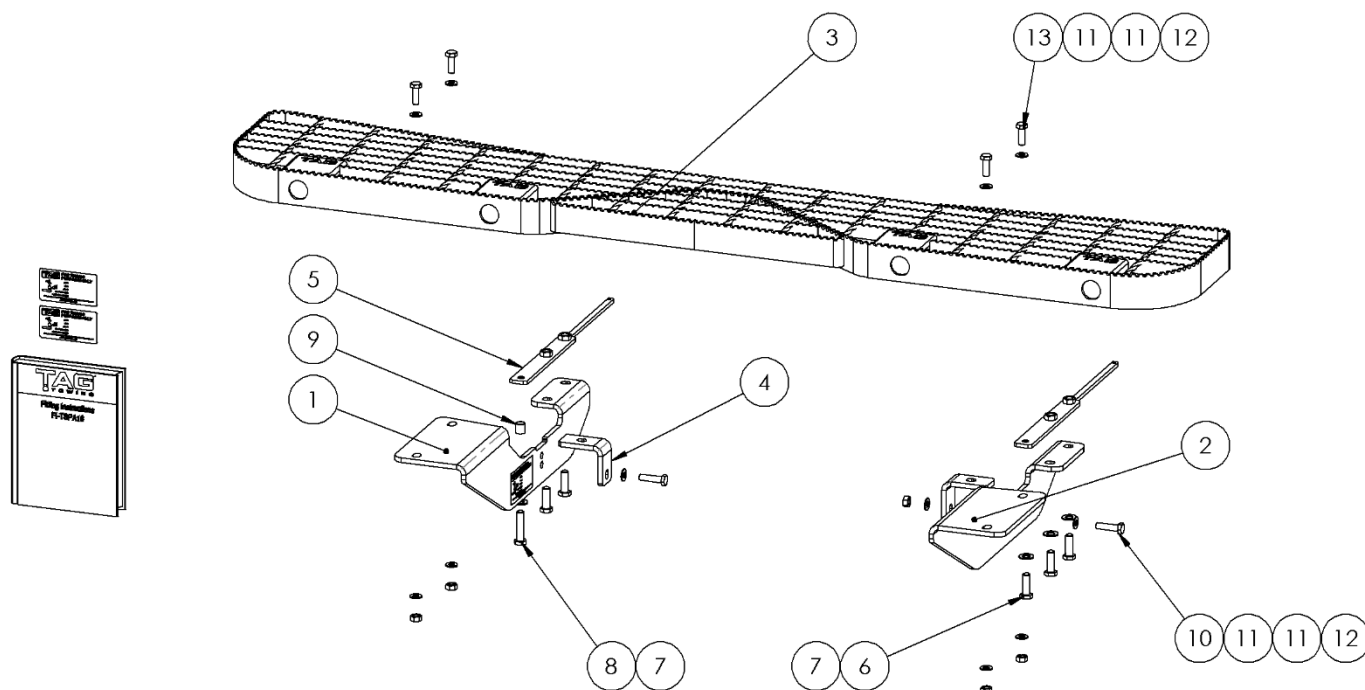
TOOLS REQUIRED

- Spanners
- Sockets
- Air Saw or similar.
- Trim Removal Tool
- Torque Wrench

IN THIS GUIDE

- Fitment Instructions
- Torque Settings
- Warranty Info

Important Information



Item No.	Description	QTY.	Item No.	Description	QTY.
1	Step Mount - T8PA23	1	9	Chassis Spacer - T8PA17	1
2	Step Mount DS	1	10	M10 x 40 x 1.25 Bolt	2
3	TAG Rear Step with Towing Relief	1	11	M10 Flat washer	12
4	Step Mount Support	2	12	M10 x 1.25 Nut	6
5	Chassis Nut Plate Assembly - T8PA17	2	13	M10 x 30 x 1.25 Bolt	4
6	M12 x 1.25 x 35 Bolt	5	14	Compliance Label	3
7	M12 Flat Washer	6	15	TAG STICKER - 100 X 40	1
8	M12 x 1.25 x 50 Bolt	1	16	Fitting Instruction	1

Important Information



ENSURE THAT THE FITTING INSTRUCTIONS ARE READ AND UNDERSTOOD PRIOR TO FITMENT
PLACE THESE INSTRUCTIONS IN THE VEHICLE'S GLOVEBOX AFTER INSTALLATION IS COMPLETED

Warning:

- This product is for towing purposes only and must only be loaded as shown in your vehicle Owner's Manual.
- This towbar is NOT to be drilled, cut, welded, or modified in any way.
- All load ratings shown are under the assumption your trailer has a functional braking system.
- When installed in positions other than the one shown in these instructions the Tow Ball/ Tow Ball Mount may interfere or obstruct certain features of your vehicle (tailgate opening, Chassis clearance, Sensor Operation, etc.)

General:

- Before fitting this towbar check installation hardware is included and correct.
- Check that the towbar is suitable for the vehicle make, model and year then make sure any changes to the vehicle design do not conflict with the fitting of this towbar. (Tray, Canopy, Suspension etc.)
- Check behind chassis rail and body panels before drilling to ensure no hazards are present (fuel lines, electrical wires etc.)
- After drilling, blow any filings clear, remove any swarf in and around the area and treat exposed metal with a suitable rust inhibitor.
- If this vehicle requires a bumper cut out, please check to make sure that your measurements are correct and clear before cutting any panels as some bumper profiles can change. If you are not sure, please ask your towbar supplier.
- To ensure the towbar is safe and secure, it is the owners' responsibility that each fastener is torqued **at 1000km intervals**. If for any reason, a fastener is not suitable for re-torquing, it is the owners' responsibility to replace it to ensure it is of the same grade (8.8) and class as the original. Failure to do so will diminish the towing capacity of the towbar and may result in the deterioration of the chassis of the vehicle. Contact an authorised TAG distributor or the TAG fitment centre if further information is required.

Towbar Maintenance and Care:

It is recommended, when not in use, the Tow Ball Mount assembly and class 4 Pin and Clip is stored inside the car away from moisture to prevent standing water from forming rust. Inspect to ensure, on regular basis, fasteners are torqued to the specifications below and in good condition.

Metric Bolt Torque Settings										
Diameter	Pitch	Grade	Torque	Unit		Diameter	Pitch	Grade	Torque	Unit
M8	1.25	8.8	29	Nm		M12	1.25	10.9	125	Nm
M10	1.25	8.8	57	Nm		M12	1.50	10.9	105	Nm
M10	1.50	8.8	44	Nm		M14	1.25	10.9	195	Nm
M12	1.25	8.8	101	Nm		M14	1.50	10.9	165	Nm
M12	1.50	8.8	97	Nm		M16	1.25	10.9	295	Nm
M12	1.75	8.8	77	Nm		M16	1.50	10.9	250	Nm
M14	2.00	8.8	122	Nm		50mm Tow Ball	N/A	N/A	300	Nm
M16	2.00	8.8	190	Nm		70mm Tow Ball	N/A	N/A	750	Nm



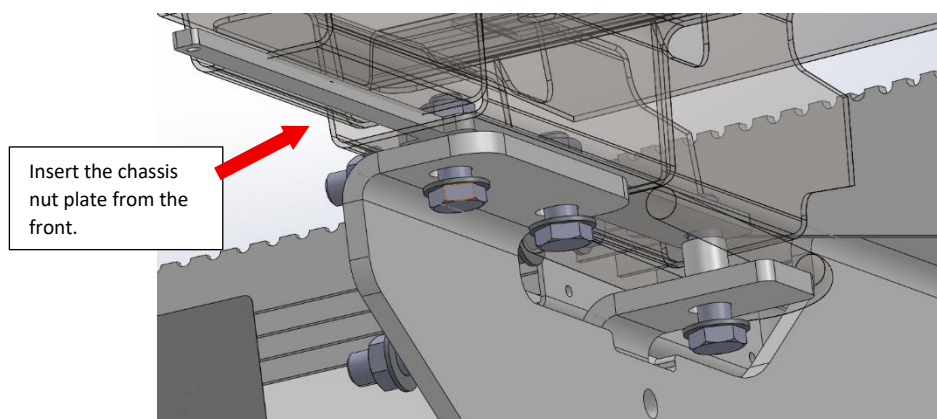
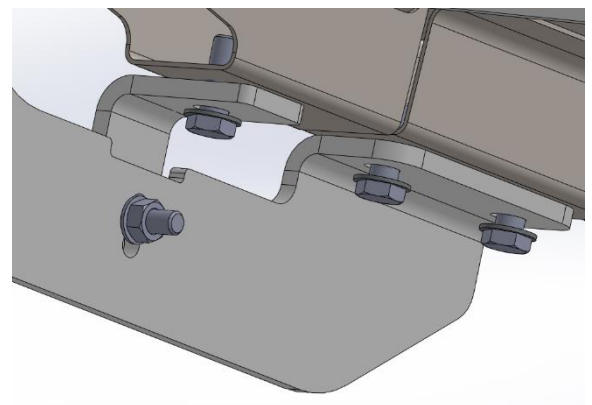
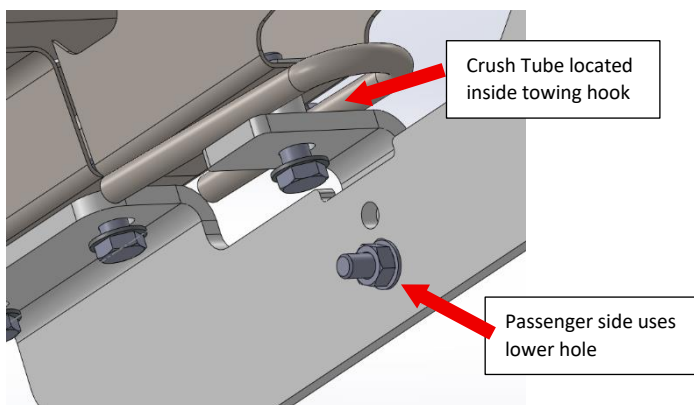
Step 1: Remove Reverse Sensors

Note to installer: Fitting of this step will inhibit the correct function of the reverse sensors. It is recommended that the provided RSM Kit be used to relocate the OEM reverse sensors onto the step & wiring extended.

- a. To remove the two centre reverse sensors from the bumper, remove 4x plastic scrivets from the bottom rear edge of the bumper. Flex the bumper outward and reach behind to disconnect the harness and remove the sensors. Remove the two outer sensors. Re-install the plastic scrivets.

Step 2: Fit Step Mounts & Step

- Under the vehicle, locate the rearmost vertical hole in each chassis, enlarge the hole to 12.5mm with a drill. On the passenger's side, this is located at the towing hook. The driver's side hole is in the same location on opposite side.
- Beginning on the passenger side, insert the Chassis Nut Plate Assembly into the front of the crash bar chassis mount cavity.
- The step mount support (8mm x 90° bent steel plate) will bridge the steel rods of the vehicle towing hook on the passenger side chassis. Insert the M12x 1.25x 50 bolt with flat washer through the slot of the longest side of the step mount support then place the crush tube over the bolt thread. Align with the rearmost tapped hole of the Chassis Nut Plate Assembly and secure loosely. **Repeat this step on the driver's side but without the crush tube and using a M12x 1.25x 35 bolt with flat washer vertically instead.**
- Insert M12x 1.25 x35 bolts with flat washers into the remaining holes of the step mounts and loosely secure to the chassis nut plates.
- Loosely fasten the side of the step mount support to the inside of the step mount with M10x 1.25x 40 bolts, washers & nuts.
- Lift the step onto the step mounts and loosely secure with 4x M10x 1.25x30 bolts with flat washers & nuts.
- Align the step to the rear bumper and tighten all bolts according to the torque specification on page (3).



TAG Warranty Statement



SWD warrants your TAG Towbar for its full product life under the following conditions:

- You can show proof of purchase.
- The towbar has been correctly installed by a suitably qualified installer.
- The towbar has not been modified or abused in any way and has only been used for the purpose intended.
- The towbar was not fitted second hand to your vehicle.

The extent of this warranty includes materials and workmanship used in the manufacture of the towbar and is to the equivalent value of current, full replacement cost.

Nothing stated or implied in this warranty limits in any way, the statutory rights that you may have.

To make a claim visit the original installer in the first instance or, if you are unable to or are not satisfied with their help, then contact us direct by phone on 1300 669122 or visit www.swd.com.au.