

# Fitting Instructions



SKU

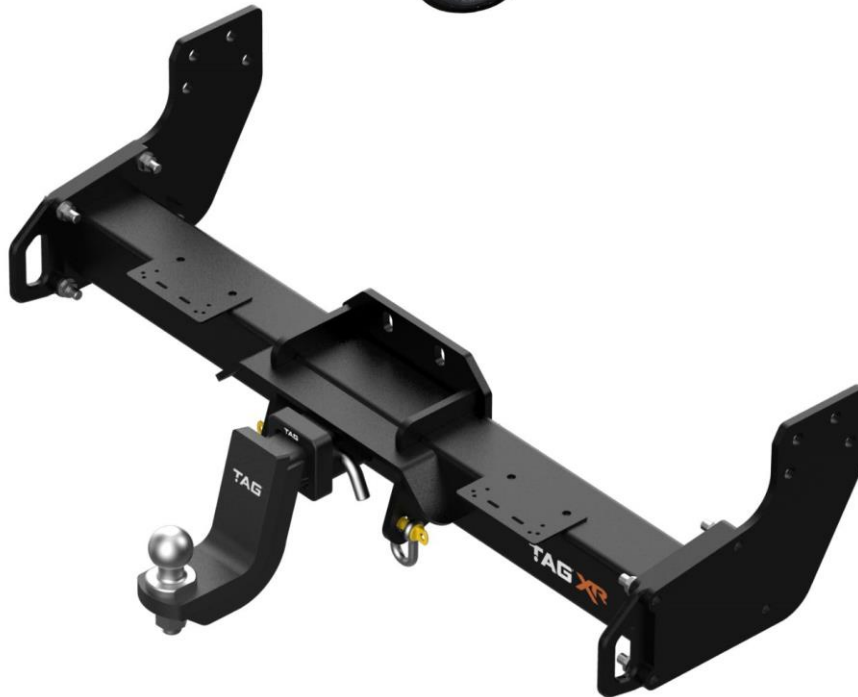
**TXRA26**

PRODUCT

**TAG Extreme Recovery Towbar for GWM Cannon Alpha Cab Chassis (08/2024 – On)**

SPECIFICATIONS

- Towbar Class: CL 4 Extreme Recovery
- Towing Capacity: 3500kg
- Tow ball Weight: 350kg
- Recovery Point WLL: 4500kg
- Approx. Fitment Time: 40 Minutes



Scan for latest instructions

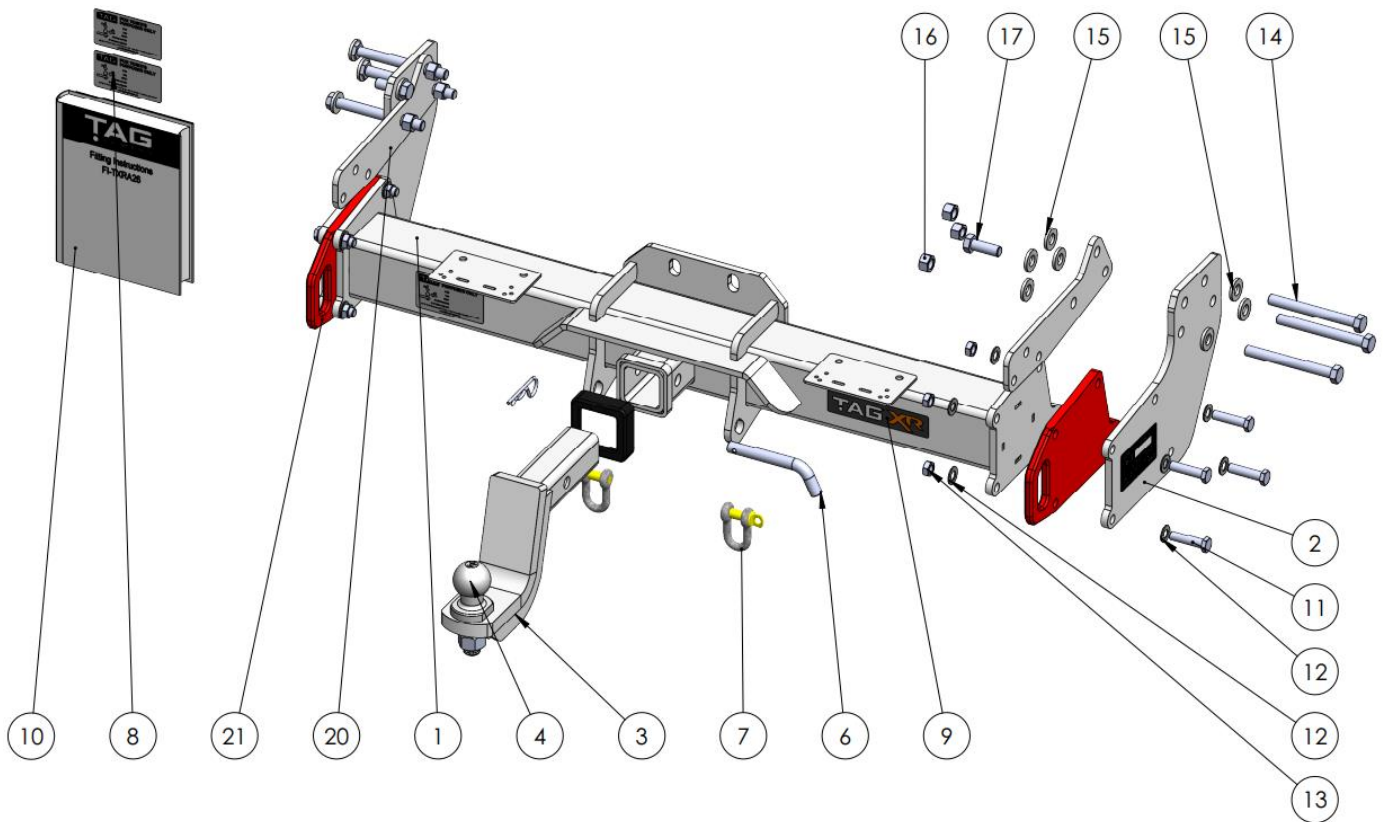
TOOLS REQUIRED

- Spanners
- Sockets
- Trim Removal Tool
- Torque Wrench

IN THIS GUIDE

- Fitment Instructions
- Torque Settings
- Warranty Info

# Towbar Assembly



Item No.	Description	QTY.	Item No.	Description	QTY.
1	Welded Assembly - TXRA26	1	11	M12 x 1.25 x 50 Bolt	8
2	Chassis End Plate	2	12	M12 Flat Washer	16
3	L4171 Tow Ball Mount	1	13	M12x1.25 Nut	8
4	50mm TAG Tow Ball - Zinc Plated	1	14	M14 x 1.5 x 130 Bolt	6
5	TAG Hitch Cover	1	15	M14 Flat Washer	14
6	Class 4 Pin & Clip	1	16	M14 X 1.5 Nut	6
7	D-Shackle - 13mm, 2000kg	2	17	M14 x 1.5 x 40 Bolt	2
8	Compliance Label	3	18	Tag WLL Sticker (4500kg)	1
9	TAG XR Sticker	1	19	Auxiliary Plate	2
10	Fitting Instruction	1	20	Recovery Plate	2

# Important Information



**ENSURE THAT THE FITTING INSTRUCTIONS ARE READ AND UNDERSTOOD PRIOR TO FITMENT  
PLACE THESE INSTRUCTIONS IN THE VEHICLE'S GLOVEBOX AFTER INSTALLATION IS COMPLETED**

## Warning:

- This product is for towing purposes only and must only be loaded as shown in your vehicle Owner's Manual.
- This towbar is NOT to be drilled, cut, welded, or modified in any way.
- All load ratings shown are under the assumption your trailer has a functional braking system.
- When installed in positions other than the one shown in these instructions the Tow Ball/ Tow Ball Mount may interfere or obstruct certain features of your vehicle (tailgate opening, Chassis clearance, Sensor Operation, etc.)

## General:

- Before fitting this towbar check installation hardware is included and correct.
- Check that the towbar is suitable for the vehicle make, model and year then make sure any changes to the vehicle design do not conflict with the fitting of this towbar. (Tray, Canopy, Suspension etc.)
- Check behind chassis rail and body panels before drilling to ensure no hazards are present (fuel lines, electrical wires etc.)
- After drilling, blow any filings clear, remove any swarf in and around the area and treat exposed metal with a suitable rust inhibitor.
- If this vehicle requires a bumper cut out, please check to make sure that your measurements are correct and clear before cutting any panels as some bumper profiles can change. If you are not sure, please ask your towbar supplier.
- To ensure the towbar is safe and secure, it is the owners' responsibility that each fastener is torqued **at 1000km intervals**. If for any reason, a fastener is not suitable for re-torquing, it is the owners' responsibility to replace it to ensure it is of the same grade (8.8) and class as the original. Failure to do so will diminish the towing capacity of the towbar and may result in the deterioration of the chassis of the vehicle. Contact an authorised TAG distributor or the TAG fitment centre if further information is required.

## Towbar Maintenance and Care:

It is recommended, when not in use, the Tow Ball Mount assembly and class 4 Pin and Clip is stored inside the car away from moisture to prevent standing water from forming rust. Inspect to ensure, on regular basis, fasteners are torqued to the specifications below and in good condition.

<i>Metric Bolt Torque Settings</i>										
Diameter	Pitch	Grade	Torque	Unit		Diameter	Pitch	Grade	Torque	Unit
M8	1.25	8.8	29	Nm		M12	1.25	10.9	125	Nm
M10	1.25	8.8	57	Nm		M12	1.50	10.9	105	Nm
M10	1.50	8.8	44	Nm		M14	1.25	10.9	195	Nm
M12	1.25	8.8	101	Nm		M14	1.50	10.9	165	Nm
M12	1.50	8.8	97	Nm		M16	1.25	10.9	295	Nm
M12	1.75	8.8	77	Nm		M16	1.50	10.9	250	Nm
M14	2.00	8.8	122	Nm		50mm Tow Ball	N/A	N/A	300	Nm
M16	2.00	8.8	190	Nm		70mm Tow Ball	N/A	N/A	750	Nm

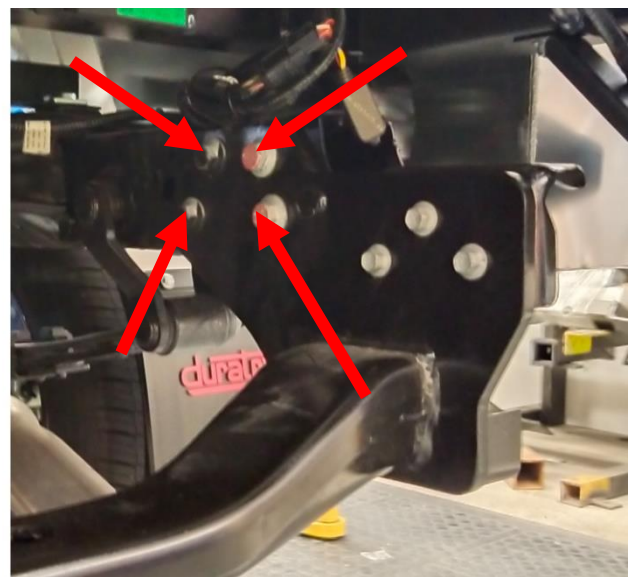
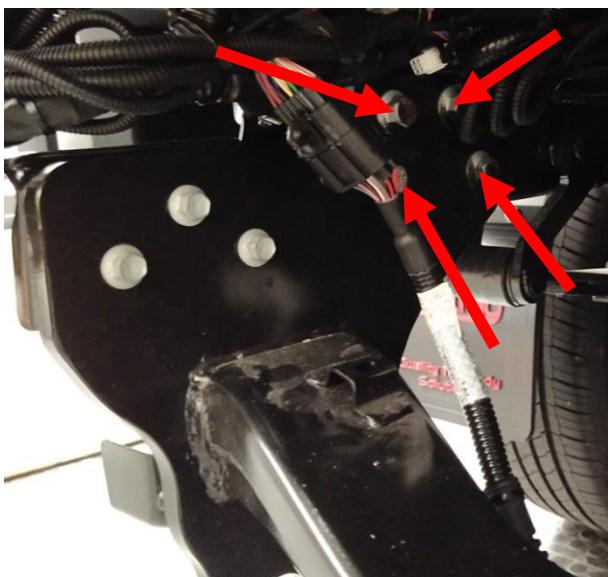
# Installation Instructions



## Step 1: Remove OEM Cross Member

**WARNING! Removal requires a two-person lift.**

- Remove the top rear-most bolt completely from the chassis. Repeat on opposite side.
- Remove the nuts from the remaining bolts. Repeat on opposite side.
- Whilst supporting the OEM crossmember, push the remaining bolts through. The crossmember will be still restrained by a stud on the rear edge of the chassis. Pull slightly rearward to remove. Discard the OEM crossmember and all fasteners.



## Step 2: Fit Towbar

a. Insert the M14 x 1.5 x 130 bolts with flat washers into the chassis holes preferably from the outside. The fasteners can be inserted from the inside of the chassis incase there are vehicle or tray parts obstructing the path from the outside.

NOTE: Do not forget the Auxiliary plate (Item #20)

b. Fit the end plates over the ends of the bolts followed by the Auxiliary Addition Plate. Secure loosely with M14 nuts with flat washers.

c. Insert 1x M14 x 1.5 x 40 bolt with flat washer into the top rear-most hole and secure loosely.

d. Repeat steps (a-c) on the opposite side.

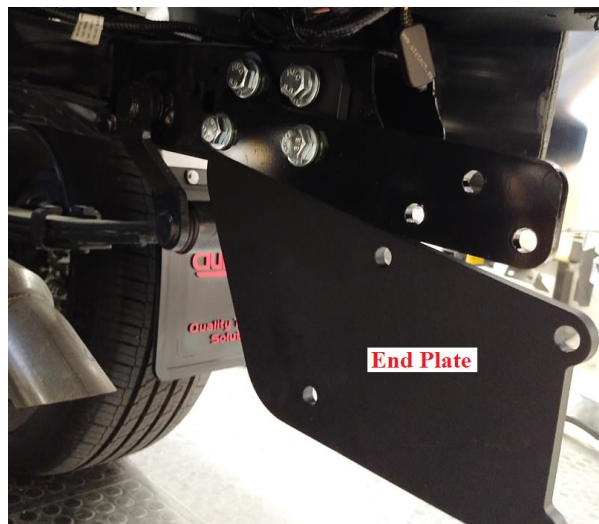
e. Lift the main bar up to the inside of the end plates and insert 2x of the four M12 bolts temporarily. Add nuts to the start of the bolt threads so the bar does not fall.

f. Working on one side at a time whilst supporting the main bar, remove the M12 bolts and insert the Recovery Point End Plate between the chassis end plate and the outside of the main bar.

g. Insert 4 x M12 x 1.25 x 50 bolts with flat washers and loosely secure with M12 x 1.25 nuts with flat washers.

h. Repeat step (f-g) on opposite side.

i. Beginning with the chassis bolts, tighten all bolts according to the torque specification chart on page 3.



# Installation Instructions

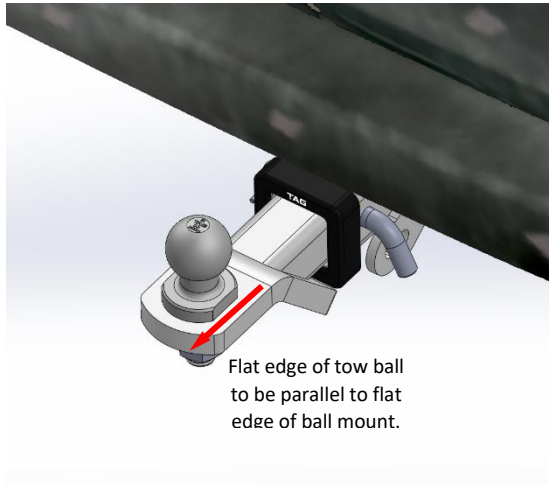


---

## Step 3: Complete Towbar & Apply Spare Compliance Label

---

- a. Attach TAG Hitch cover with rubber mallet carefully to prevent breaking.
- b. Attach the tow ball to the ball mount. The flat side of the tow ball **MUST BE** parallel to the outer edge of the ball mount. **Tighten the tow ball to 300Nm.**
- c. Insert the ball mount into the receiver and secure with the Pull pin and R-Clip. When not in use, secure the Ball Mount in a safe place inside your vehicle.
- d. Apply one of the compliance labels to the pillar of the driver's door. Place the remaining label and the fitting instructions in the vehicle handbook.



# TAG Warranty Statement



SWD warrants your TAG Towbar for its full product life under the following conditions:

- You can show proof of purchase.
- The towbar has been correctly installed by a suitably qualified installer.
- The towbar has not been modified or abused in any way and has only been used for the purpose intended.
- The towbar was not fitted second hand to your vehicle.

The extent of this warranty includes materials and workmanship used in the manufacture of the towbar and is to the equivalent value of current, full replacement cost.

Nothing stated or implied in this warranty limits in any way, the statutory rights that you may have.

To make a claim visit the original installer in the first instance or, if you are unable to or are not satisfied with their help, then contact us direct by phone on 1300 669122 or visit [www.swd.com.au](http://www.swd.com.au).