

Fitting Instructions



SKU

T7GA21

PRODUCT

TAG Heavy Duty Towbar for GWM Cannon Alpha (08/2024 - On) Style-side

SPECIFICATIONS

- Towbar Class: CL 4 Heavy Duty
- Towing Capacity: 3500kg
- Tow ball Weight: 350kg
- Approx. Fitment Time: 60 Minutes



Scan for latest
version of these
instructions

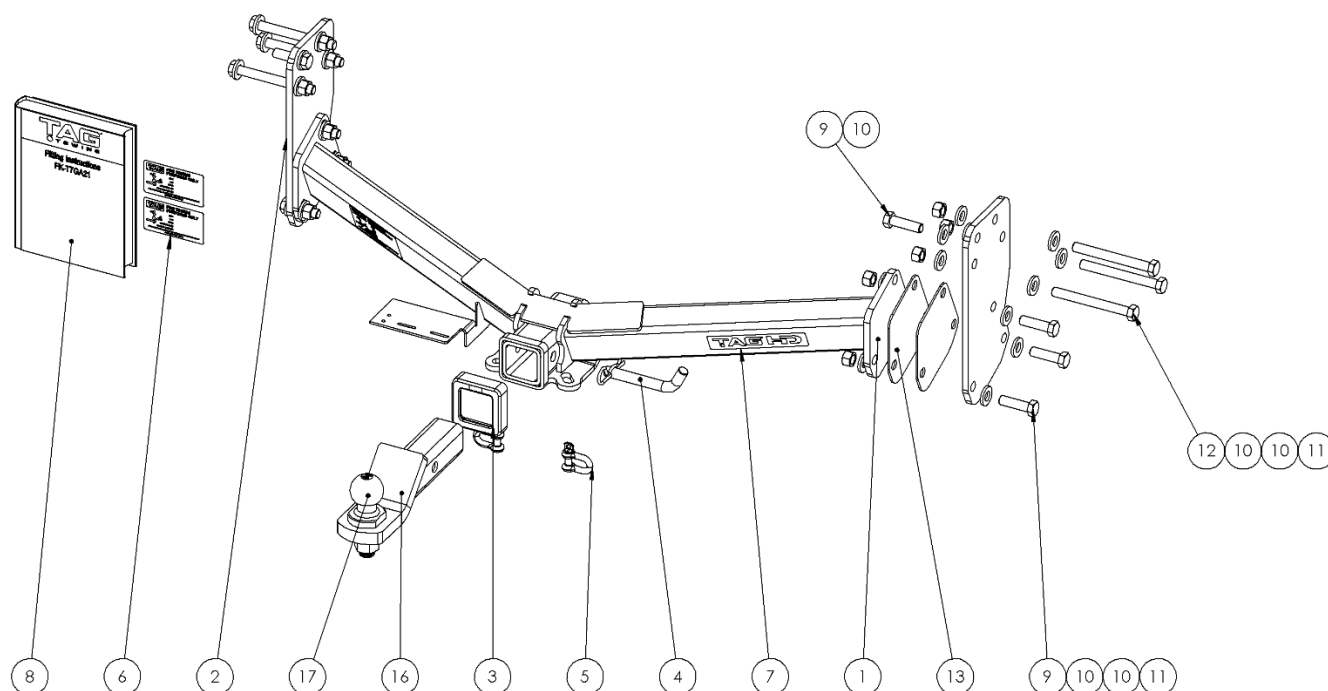
TOOLS REQUIRED

- Spanners
- Sockets
- Air Saw or similar.
- Trim Removal Tool
- Torque Wrench

IN THIS GUIDE

- Fitment Instructions
- Torque Settings
- Warranty Info

Towbar Assembly



Item No.	Description	QTY.	Item No.	Description	QTY.
1	Welded Assembly - T7GA21	1	9	M14 x 1.5 x 50 Set Screw	8
2	End Plate	2	10	M14 Flat Washer	26
3	TAG Hitch Cover	1	11	M14 X 1.5 Nut	12
4	Class 4 Pin & Clip	1	12	M14 x 1.5 x 130 Bolt	6
5	D-Shackle - 10mm. 1000kg	2	13	End Cap Spacer	2
6	Compliance Label	3	16	L4045 Tongue	1
7	TAG HD Sticker 150 x 33mm	1	17	50mm TAG Tow Ball - Chrome	1
8	Fitting Instruction	1			

Important Information



Warning:

- This product is for towing purposes only and must only be loaded as shown in your vehicle Owner's Manual.
- This towbar is NOT to be drilled, cut, welded, or modified in any way.
- Check behind chassis rail and body panels before drilling to ensure no hazards are present.
- All load ratings shown are under the assumption your trailer has a functional braking system installed.
- When installed in positions other than the one depicted in these instructions the Tow Ball Mount may interfere or obstruct certain features of your vehicle (tailgate opening, Chassis clearance, etc.)

General:

- Before fitting this towbar read fitting instructions and check installation hardware is correct.
- Check that the towbar is suitable for the vehicle and be wary of any changes to the vehicle design that may conflict with the fitting of this towbar. (Tray, Canopy, Suspension etc.)
- After drilling, blow any filings clear, remove any burrs and treat exposed metal with a rust inhibitor.
- The high tensile fasteners supplied with this product are an integral feature to achieving the specified rating, if replacement is required ensure that fasteners of the same grade (8.8) & quality are used. Contact an authorised TAG distributor or the TAG fitment center - (07) 3208 3022 - if further information is required.

Towbar Maintenance and Care:

It is recommended, when not in use, that the Tow Ball Mount assembly and class 4 Pin and Clip is stored inside the car away from moisture to prevent standing water from forming rust. Inspect to ensure, on regular basis, fasteners are torqued to the specifications below and in good condition.

Ensure that the fitting instructions are read and understood prior to fitment, Following the fitment place these instructions in the vehicle's glovebox after installation is completed.

Metric Bolt Torque Settings

Diameter	Pitch	Grade	Torque	Unit		Diameter	Pitch	Grade	Torque	Unit
M8	1.25	8.8	29	Nm		M12	1.25	10.9	125	Nm
M10	1.25	8.8	57	Nm		M12	1.50	10.9	105	Nm
M10	1.50	8.8	44	Nm		M14	1.25	10.9	195	Nm
M12	1.25	8.8	101	Nm		M14	1.50	10.9	165	Nm
M12	1.50	8.8	97	Nm		M16	1.25	10.9	295	Nm
M12	1.75	8.8	77	Nm		M16	1.50	10.9	250	Nm
M14	2.00	8.8	122	Nm		50mm Tow Ball	N/A	N/A	300	Nm
M16	2.00	8.8	190	Nm		70mm Tow Ball	N/A	N/A	750	Nm

Step 1: Fit Towbar

- a. Lower the spare wheel. **Toolkit can be found in the pocket on the back of the RHS rear seat.**
- b. Remove and discard the rear, uppermost M14 bolt securing the vehicle's cross member & recovery point from the captive thread of the chassis. Repeat on opposite side.
- c. Loosen the remaining M14x110 factory bolts and remove the nuts. **Do not remove the bolts.**
- d. Lift the endplates up to the inside face of the vehicle's cross member and over the existing bolts. Insert 1x M14x 1.5x 50 bolt with flat washer into rear, uppermost hole and captive thread of the chassis.
- e. Remove and replace the 6x original M14 bolts (3 per side) with the supplied M14 x 1.5x 130 bolts & flat washers. Secure loosely with M14 nuts & flat washers.
- f. **Discard all the original fasteners.**
- g. Lift the welded assembly up to the inside of the endplates and loosely secure with the remaining M14 x 1.5 x 50 bolts, flat washers & nuts.
- h. On the RHS, check the size of the gap between the endcap of the welded assembly and the chassis endplate. Insert the provided 3mm spacer(s).
- i. Beginning at the chassis, tighten all bolts according to the torque specification on page 3.

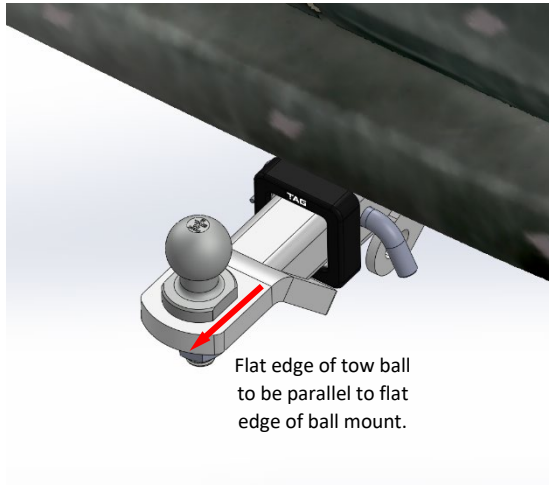


Installation Instructions



Step 2: Complete Towbar & Apply Spare Compliance Label

- Attach TAG Hitch cover with rubber mallet carefully to prevent breaking.
- Attach the tow ball to the ball mount. The flat side of the tow ball **MUST BE** parallel to the outer edge of the ball mount. **Tighten the tow ball to 300Nm.**
- Insert the ball mount into the receiver and secure with the Pull pin and R-Clip. When not in use, secure the Ball Mount in a safe place inside your vehicle.
- Apply one of the compliance labels to the pillar of the driver's door. Place the remaining label and the fitting instructions in the vehicle handbook.



TAG Warranty Statement



SWD warrants your TAG Towbar for its full product life under the following conditions:

- You can show proof of purchase.
- The towbar has been correctly installed by a suitably qualified installer.
- The towbar has not been modified or abused in any way and has only been used for the purpose intended.
- The towbar was not fitted second hand to your vehicle.

The extent of this warranty includes materials and workmanship used in the manufacture of the towbar and is to the equivalent value of current, full replacement cost.

Nothing stated or implied in this warranty limits in any way, the statutory rights that you may have.

To make a claim visit the original installer in the first instance or, if you are unable to or are not satisfied with their help, then contact us direct by phone on 1300 669122 or visit www.swd.com.au.