

Fitting Instructions



SKU

T7F872

PRODUCT

**TAG Heavy Duty Towbar
for Ford Transit Custom
(06/2024 - On)**

SPECIFICATIONS

- Towbar Class: CL 4 Heavy Duty
- Towing Capacity: 2500kg
- Tow ball Weight: 200kg
- Approx. Fitment Time: 90 Minutes



Scan for latest
version of these
instructions

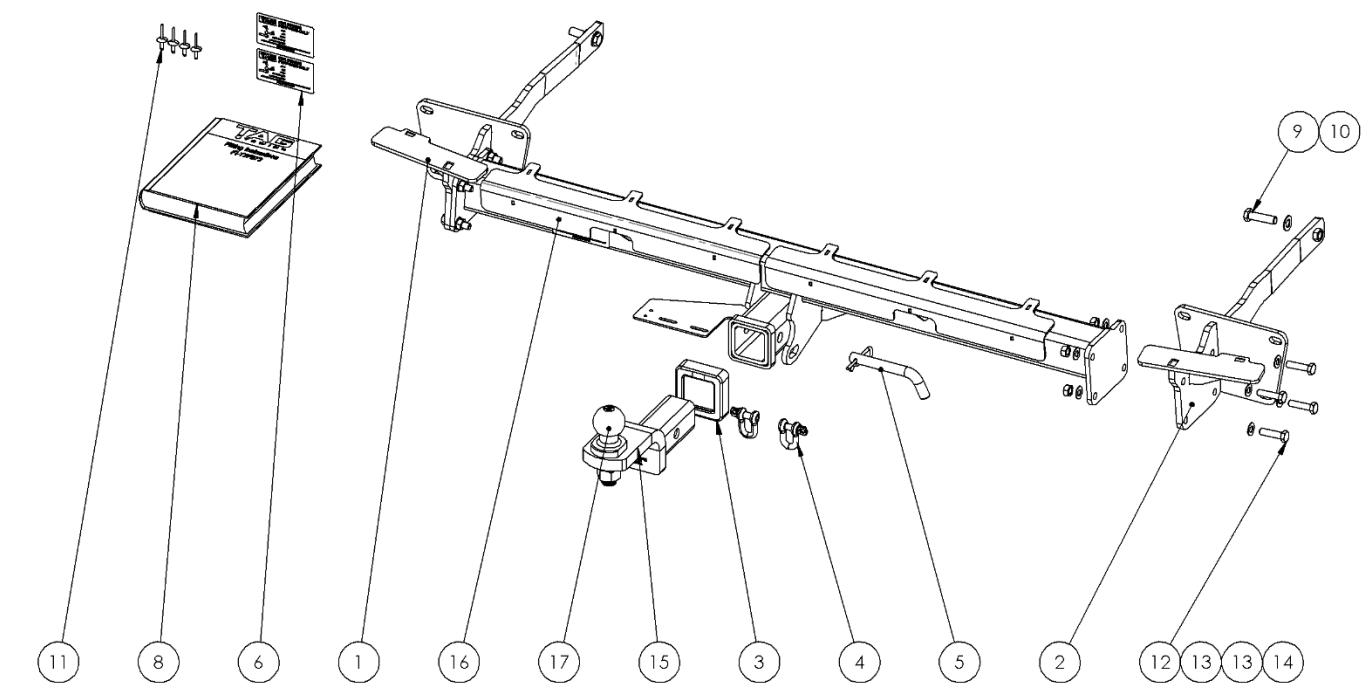
TOOLS REQUIRED

- Spanners
- Sockets
- Air Saw or similar.
- Trim Removal Tool
- Torque Wrench

IN THIS GUIDE

- Fitment Instructions
- Torque Settings
- Warranty Info

Towbar Assembly



Item No.	Description	QTY.	Item No.	Description	QTY.
1	End Plate Assembly	1	10	M12 Flat Washer	2
2	End Plate Assembly DS	1	11	Large Flange Head Pop Blind Rivet 4.8mm	4
3	TAG Hitch Cover	1	12	M10 x 40 x 1.25 Bolt	8
4	D-Shackle - 10mm. 1000kg	2	13	M10 Flat Washer	16
5	Class 4 Pin & Clip	1	14	M10 X 1.25 PITCH NUT HEX DIN 9	8
6	Compliance Label	3	15	TAG Tow Ball Mount - L4120	1
7	TAG HD Sticker 150 x 33mm	1	16	Welded Assembly for T4F872	1
8	Fitting Instruction	1	17	50mm TAG Tow Ball with Flat edge -	1
9	M12 x 1.25 x 45 Bolt	2			

Important Information



Warning:

- This product is for towing purposes only and must only be loaded as shown in your vehicle Owner's Manual.
- This towbar is NOT to be drilled, cut, welded, or modified in any way.
- Check behind chassis rail and body panels before drilling to ensure no hazards are present.
- All load ratings shown are under the assumption your trailer has a functional braking system installed.
- When installed in positions other than the one depicted in these instructions the Tow Ball Mount may interfere or obstruct certain features of your vehicle (tailgate opening, Chassis clearance, etc.)

General:

- Before fitting this towbar read fitting instructions and check installation hardware is correct.
- Check that the towbar is suitable for the vehicle and be wary of any changes to the vehicle design that may conflict with the fitting of this towbar. (Tray, Canopy, Suspension etc.)
- After drilling, blow any filings clear, remove any burrs and treat exposed metal with a rust inhibitor.
- The high tensile fasteners supplied with this product are an integral feature to achieving the specified rating, if replacement is required ensure that fasteners of the same grade (8.8) & quality are used. Contact an authorised TAG distributor or the TAG fitment center - (07) 3208 3022 - if further information is required.

Towbar Maintenance and Care:

It is recommended, when not in use, that the Tow Ball Mount assembly and class 4 Pin and Clip is stored inside the car away from moisture to prevent standing water from forming rust. Inspect to ensure, on regular basis, fasteners are torqued to the specifications below and in good condition.

Ensure that the fitting instructions are read and understood prior to fitment, Following the fitment place these instructions in the vehicle's glovebox after installation is completed.

Metric Bolt Torque Settings

Diameter	Pitch	Grade	Torque	Unit		Diameter	Pitch	Grade	Torque	Unit
M8	1.25	8.8	29	Nm		M12	1.25	10.9	125	Nm
M10	1.25	8.8	57	Nm		M12	1.50	10.9	105	Nm
M10	1.50	8.8	44	Nm		M14	1.25	10.9	195	Nm
M12	1.25	8.8	101	Nm		M14	1.50	10.9	165	Nm
M12	1.50	8.8	97	Nm		M16	1.25	10.9	295	Nm
M12	1.75	8.8	77	Nm		M16	1.50	10.9	250	Nm
M14	2.00	8.8	122	Nm		50mm Tow Ball	N/A	N/A	300	Nm
M16	2.00	8.8	190	Nm		70mm Tow Ball	N/A	N/A	750	Nm

Installation Instructions



Step 1: Remove Rear Bumper

- a. Open the tailgate/ rear doors.
- b. Remove 2x plastic Xmas tree rivets from the underside of the bumper.
- c. Inside the wheel arch, remove the plastic scrivet fastening the mud flap to the body.
- d. Swing the mud flap out of the way to reveal a pop rivet fastening the lower (Grey) plastic bumper. **Do not remove the 2x upper pop rivets from the wheel arch and mud flap.**
- e. Use a drill to remove the bottom-most rivet & discard the rivet.
- f. Repeat steps 1 b-e on the opposite side.
- g. Disconnect the bumper harness on the left-hand side.
- h. Beginning at the wheel arch, carefully separate the lower bumper from the top half via 3x tabs located between the wheel arch and corner of the bumper and 2x below the rear reflector. Tabs can be located via the underside of the bumper and must be pulled down slightly to release them from the upper bumper skin.
- i. Remove the crash bar via 4x M10 x 1.25 nuts on each side. **Discard the crash bar. Retain the nuts.**
- j. Remove the 2x large molded lower bumper mounts from the body panel via 1x M8 bolt per mount. **Set aside to refit later.**

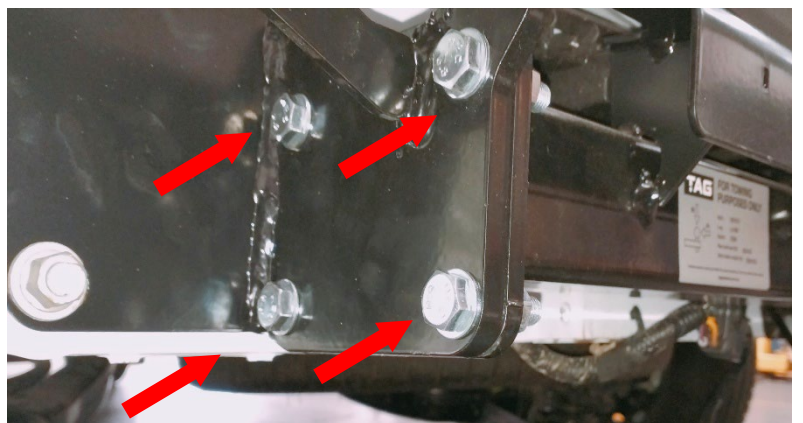
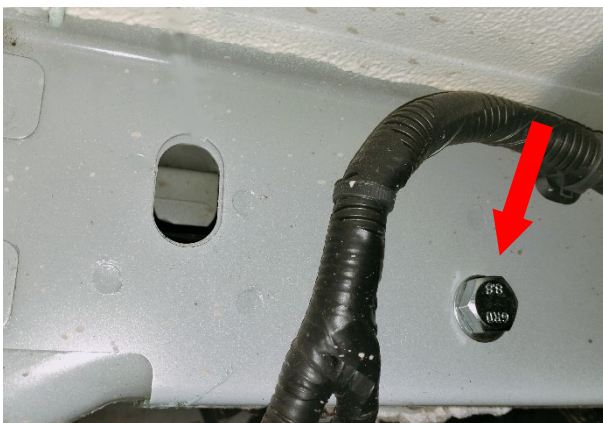
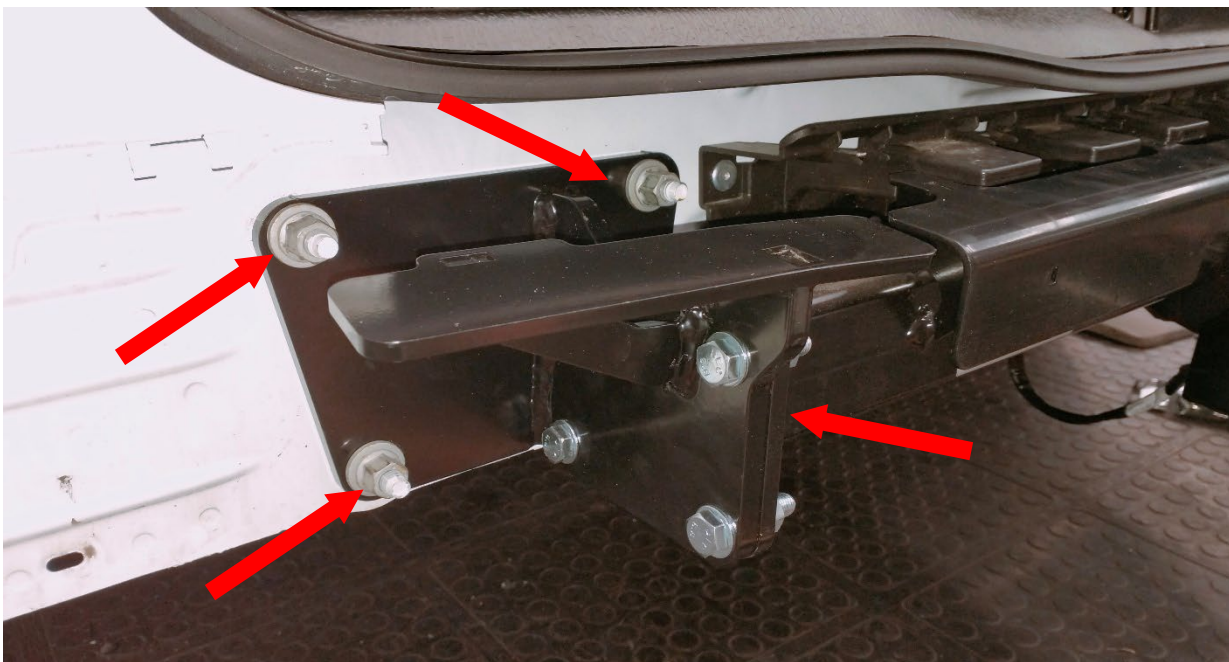


Installation Instructions



Step 2: Fit Towbar

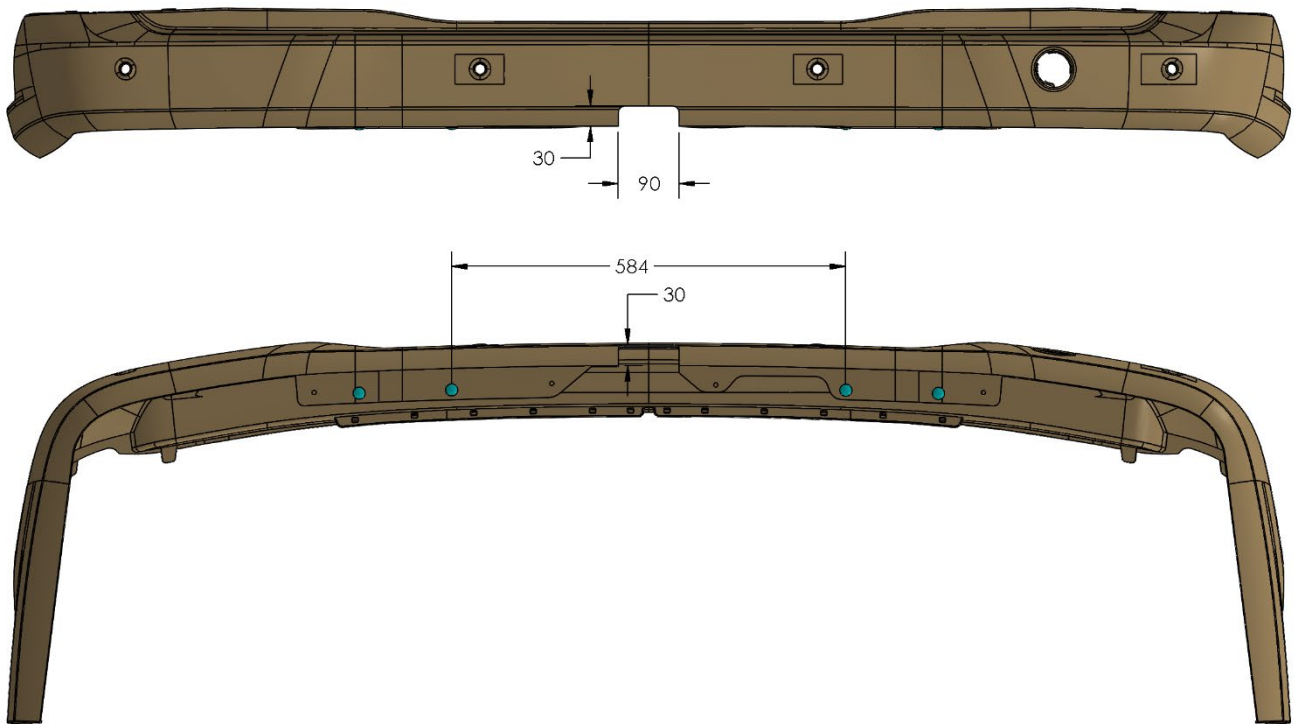
- Insert the arms of the towbar assembly into the chassis openings on the beaver panel.
- Align holes of the beaver panel plates with crash bar mounting studs and fasten with the original crash bar nuts.
- Insert M12 x 1.25 x 45 bolts with flat washers in holes on inner face of chassis rails to align with forward most captive nut on towbar arms.
- Lift Main Bar assembly up to end plate assemblies and insert 4 x M10 x 1.25 x 40 with flat washers. Loosely fasten with M10 nuts with flat washers.
- Fasten all bolts according to torque specification on page 3.



Step 3: Cut Bumper

Note: The towbar installer is ultimately responsible for the location & quality of the bumper cut. To avoid mistakes, please use the following measurements as a guide only. We suggest making small incremental cuts and regularly test-fit the bumper to ensure an accurate and tidy appearance. The additional application of rubber pinch-weld around the cut edge ensures a neat & tidy look.

- Establish the centre of the bumper.
- Mark the cut-out 90mm wide x 30mm high from the bottom lip of the bumper. (1st contour). See diagram.
- Cut the bumper using an air hacksaw or other suitable cutting device.
- De-burr all cut edges.
- Refit bumper in reverse of steps

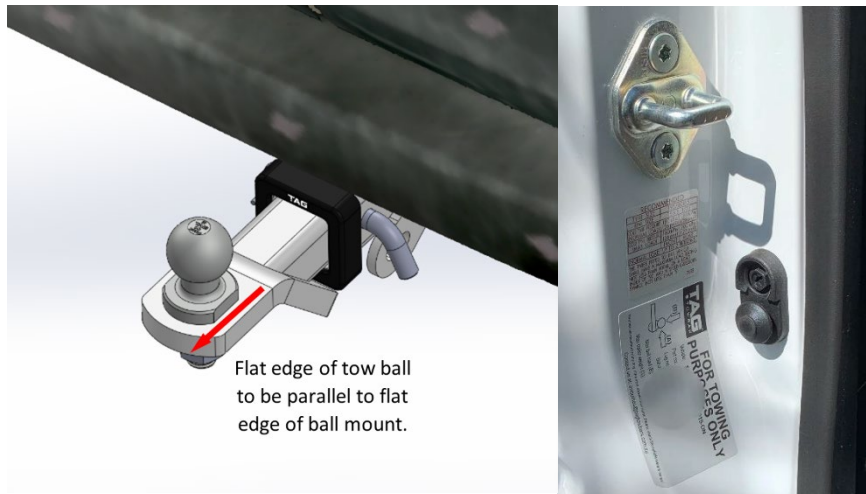


Installation Instructions



Step 4: Complete Towbar & Apply Spare Compliance Label

- a. Attach TAG Hitch cover with rubber mallet carefully to prevent breaking.
- b. Attach Tow ball to Ball Mount and slide into receiver. Secure with Pull pin and Clip if you are going to tow straight away. Alternatively, secure the Ball Mount in a safe place inside your vehicle.
- c. Apply one of the compliance labels to the pillar of the driver's door. Leave the remaining label and the fitting instructions in the vehicle handbook.



TAG Warranty Statement



SWD warrants your TAG Towbar for its full product life under the following conditions:

- You can show proof of purchase.
- The towbar has been correctly installed by a suitably qualified installer.
- The towbar has not been modified or abused in any way and has only been used for the purpose intended.
- The towbar was not fitted second hand to your vehicle.

The extent of this warranty includes materials and workmanship used in the manufacture of the towbar and is to the equivalent value of current, full replacement cost.

Nothing stated or implied in this warranty limits in any way, the statutory rights that you may have.

To make a claim visit the original installer in the first instance or, if you are unable to or are not satisfied with their help, then contact us direct by phone on 1300 669122 or visit www.swd.com.au.