

# Fitting Instructions



SKU

**T7DA14**

PRODUCT

## **TAG Heavy Duty Towbar for Nissan Xtrail (08/2024 - on)**

SPECIFICATIONS

- Towbar Class: CL 4 Heavy Duty
- Towing Capacity: 2000kg
- Tow ball Weight: 200kg
- Approx. Fitment Time: 60 Minutes



Scan for latest  
version of these  
instructions

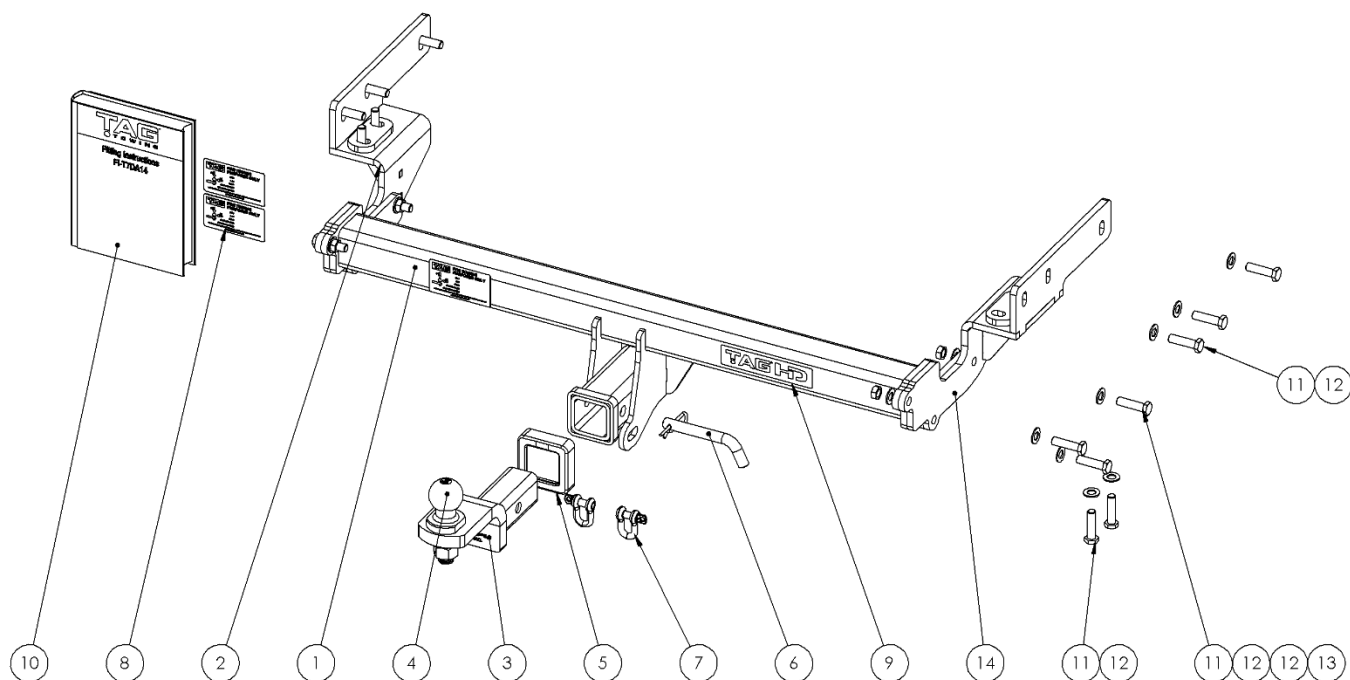
TOOLS REQUIRED

- Spanners
- Sockets
- Air Saw or similar.
- Trim Removal Tool
- Torque Wrench

IN THIS GUIDE

- Fitment Instructions
- Torque Settings
- Warranty Info

# Towbar Assembly



Item No.	Description	QTY.	Item No.	Description	QTY.
1	Towbar Assembly	1	8	Compliance Label	3
2	End Plate Assembly PS	1	9	TAG HD Sticker 150 x 33mm	1
3	TAG Tow Ball Mount - L4120,	1	10	Fitting Instruction	1
4	50mm TAG Tow Ball with Flat edge - Chrome	1	11	M12 x 1.25 x 45 Bolt	16
5	TAG Hitch Cover	1	12	M12 Flat Washer	22
6	Class 4 Pin & Clip	1	13	M12 x 1.25 Nut	6
7	D-Shackle - 10mm. 1000kg	2	14	End Plate Assembly	1

# Important Information



## Warning:

- This product is for towing purposes only and must only be loaded as shown in your vehicle Owner's Manual.
- This towbar is NOT to be drilled, cut, welded, or modified in any way.
- Check behind chassis rail and body panels before drilling to ensure no hazards are present.
- All load ratings shown are under the assumption your trailer has a functional braking system installed.
- When installed in positions other than the one depicted in these instructions the Tow Ball Mount may interfere or obstruct certain features of your vehicle (tailgate opening, Chassis clearance, etc.)

## General:

- Before fitting this towbar read fitting instructions and check installation hardware is correct.
- Check that the towbar is suitable for the vehicle and be wary of any changes to the vehicle design that may conflict with the fitting of this towbar. (Tray, Canopy, Suspension etc.)
- After drilling, blow any filings clear, remove any burrs and treat exposed metal with a rust inhibitor.
- The high tensile fasteners supplied with this product are an integral feature to achieving the specified rating, if replacement is required ensure that fasteners of the same grade (8.8) & quality are used. Contact an authorised TAG distributor or the TAG fitment center - (07) 3208 3022 - if further information is required.

## Towbar Maintenance and Care:

It is recommended, when not in use, that the Tow Ball Mount assembly and class 4 Pin and Clip is stored inside the car away from moisture to prevent standing water from forming rust. Inspect to ensure, on a regular basis, fasteners are torqued to the specifications below and in good condition.

Ensure that the fitting instructions are read and understood prior to fitment, Following the fitment place these instructions in the vehicle's glovebox after installation is completed.

*Metric Bolt Torque Settings*

Diameter	Pitch	Grade	Torque	Unit		Diameter	Pitch	Grade	Torque	Unit
M8	1.25	8.8	29	Nm		M12	1.25	10.9	125	Nm
M10	1.25	8.8	57	Nm		M12	1.50	10.9	105	Nm
M10	1.50	8.8	44	Nm		M14	1.25	10.9	195	Nm
M12	1.25	8.8	101	Nm		M14	1.50	10.9	165	Nm
M12	1.50	8.8	97	Nm		M16	1.25	10.9	295	Nm
M12	1.75	8.8	77	Nm		M16	1.50	10.9	250	Nm
M14	2.00	8.8	122	Nm		50mm Tow Ball	N/A	N/A	300	Nm
M16	2.00	8.8	190	Nm		70mm Tow Ball	N/A	N/A	750	Nm

# Installation Instructions



## Step 1: Remove Rear Bumper

- a. Lift the tailgate.
- b. Remove 2x screws below the taillight assembly.
- c. Remove the plastic covers over the taillight fasteners and remove each taillight outward/ perpendicular to the side of the vehicle. **Note: Some force may be required to dislodge the forward-most body mount studs.**
- d. Disconnect the taillight harness.
- e. Inside the wheel arch remove 1x plastic scrivet.
- f. If fitted, remove the mudflap via 2x phillips head screws.
- g. On the bottom edge of the bumper, directly behind the wheelarch, remove 1x scrivet and 1x bolt.
- h. Carefully unclip the wheelarch trim to expose 1x hex head bolt at the top. Remove the bolt.
- Note: The wheel arch trim may be fully removed from the body by pushing the trim toward the rear door opening and releasing from the forward-most body clip.**
- i. Repeat steps *b-f* on opposite side.
- j. Remove 2x scrivets from the bottom rear-most edge of the bumper.
- k. Disconnect the bumper harness (2x plugs) located rearward of the DS wheel arch.
- l. Beginning at each wheel arch, carefully unclip the bumper and remove rearwards.



# Installation Instructions



---

## Step 2: Fit Towbar

---

- a. Lift the endplates up to the chassis and align with the holes of the chassis. Loosely fasten with M12 x 45 x 1.25 bolts with flat washers.
- b. Repeat on opposite side.
- c. Lift the main bar assembly up to the endplates and align holes. Loosely fasten with M12 x 45 x 1.25 bolts with flat washers.
- d. Beginning at the chassis, tighten all fasteners to the torque specification on page 3.



# Installation Instructions



## Step 3: Cut Bumper

**Note:** The towbar installer is ultimately responsible for the location & quality of the bumper cut. To avoid mistakes, please use the following measurements as a guide only. We suggest making small incremental cuts and regularly test fit the bumper to ensure an accurate and tidy appearance. The additional application of rubber pinch-weld around the cut edge ensures a neat & tidy look.

- On some models the centre line may already be inscribed on the inside of the bumper. Otherwise, establish the centre line of the bumper and mark with a pen or pencil.
- Measure 45mm either side of the bumper and up to the split in the two plastic panels.
- Inside the bumper, the outer sections of the lower trim need to be cut for the bumper to be re-installed. Use the photo below to mark the appropriate area to be cut on both PS & DS.
- Using an air hacksaw or similar, carefully cut the bumper.
- Deburr all cut edges.



Driver's side inner bumper section removed. Repeat on passenger side

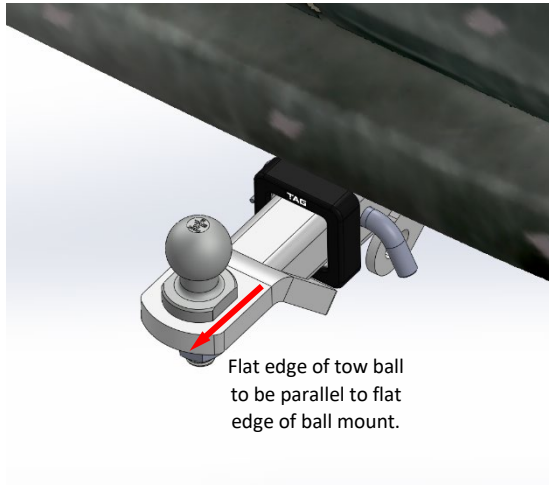


# Installation Instructions



## Step 4: Complete Towbar & Apply Spare Compliance Label

- Attach TAG Hitch cover with rubber mallet carefully to prevent breaking.
- Attach the tow ball to the ball mount. The flat side of the tow ball **MUST BE** parallel to the outer edge of the ball mount. **Tighten the tow ball to 300Nm.**
- Insert the ball mount into the receiver and secure with the Pull pin and R-Clip. When not in use, secure the Ball Mount in a safe place inside your vehicle.
- Apply one of the compliance labels to the pillar of the driver's door. Place the remaining label and the fitting instructions in the vehicle handbook.



# TAG Warranty Statement



SWD warrants your TAG Towbar for its full product life under the following conditions:

- You can show proof of purchase.
- The towbar has been correctly installed by a suitably qualified installer.
- The towbar has not been modified or abused in any way and has only been used for the purpose intended.
- The towbar was not fitted second hand to your vehicle.

The extent of this warranty includes materials and workmanship used in the manufacture of the towbar and is to the equivalent value of current, full replacement cost.

Nothing stated or implied in this warranty limits in any way, the statutory rights that you may have.

To make a claim visit the original installer in the first instance or, if you are unable to or are not satisfied with their help, then contact us direct by phone on 1300 669122 or visit [www.swd.com.au](http://www.swd.com.au).