

Fitting Instructions



SKU

TXR883

PRODUCT

**TAG Extreme Recovery Towbar
for GWM Tank 300 (10/2022 - on)**

SPECIFICATIONS

- Towbar Class: CL 7 Extreme Recovery
- Towing Capacity: 2500kg
- Tow ball Weight: 250kg
- Recovery Point WLL: 3000kg
- Approx. Fitment Time: 60 Minutes



Scan for latest
version of these
instructions

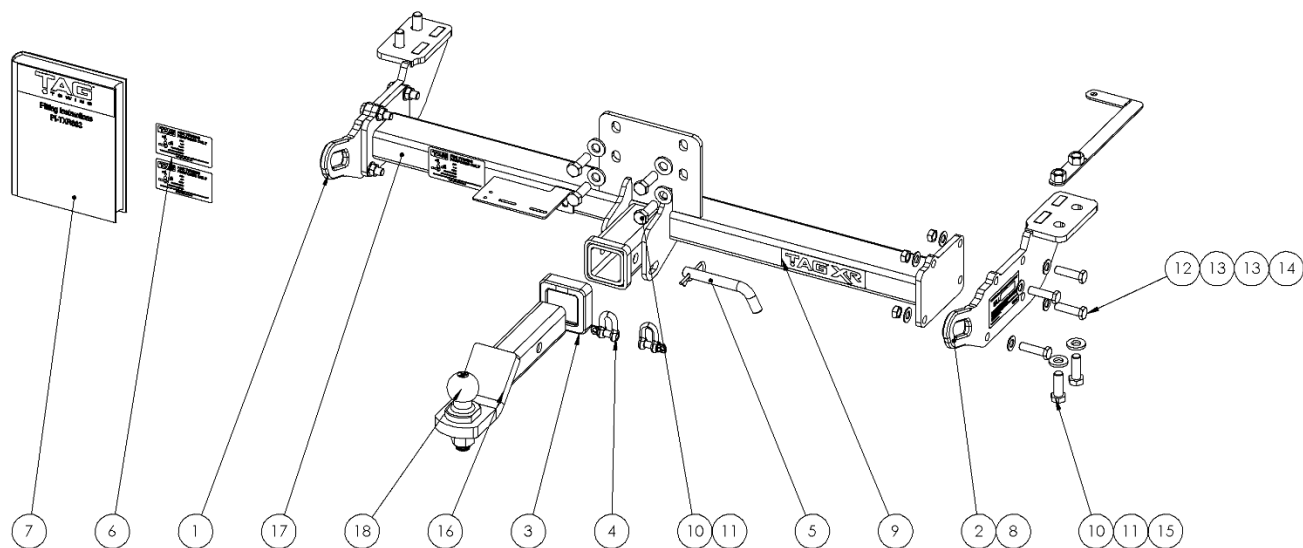
TOOLS REQUIRED

- Spanners
- Sockets
- Air Saw or similar.
- Trim Removal Tool
- Torque Wrench

IN THIS GUIDE

- Fitment Instructions
- Torque Settings
- Warranty Info

Towbar Assembly



Item No.	Description	QTY.	Item No.	Description	QTY.
1	End Plate Assembly	1	10	M14 x 1.5 x 40 Set Screw	8
2	End Plate Assembly DS	1	11	M14 Flat Washer	8
3	TAG Hitch Cover	1	12	M12 x 1.25 x 45 Bolt	8
4	D-Shackle - 10mm. 1000kg	2	13	M12 Flat Washer	16
5	Class 4 Pin & Clip	1	14	M12 x 1.25 Nut	8
6	Compliance Label	3	15	Inner Chassis Nut Plate	1
7	Fitting Instruction	1	16	L4045TXR Tow Ball Mount	1
8	Tag WLL Sticker (Blank)	1	17	Main Bar Assembly	1
9	TAG XR Sticker 150 x 33mm	1	18	50mm TAG Tow Ball Zinc Plated	1

Important Information



Warning:

- This product is for towing purposes only and must only be loaded as shown in your vehicle Owner's Manual.
- This towbar is NOT to be drilled, cut, welded, or modified in any way.
- Check behind chassis rail and body panels before drilling to ensure no hazards are present.
- All load ratings shown are under the assumption your trailer has a functional braking system installed.
- When installed in positions other than the one depicted in these instructions the Tow Ball Mount may interfere or obstruct certain features of your vehicle (tailgate opening, Chassis clearance, etc.)

General:

- Before fitting this towbar read fitting instructions and check installation hardware is correct.
- Check that the towbar is suitable for the vehicle and be wary of any changes to the vehicle design that may conflict with the fitting of this towbar. (Tray, Canopy, Suspension etc.)
- After drilling, blow any filings clear, remove any burrs and treat exposed metal with a rust inhibitor.
- The high tensile fasteners supplied with this product are an integral feature to achieving the specified rating, if replacement is required ensure that fasteners of the same grade (8.8) & quality are used. Contact an authorised TAG distributor or the TAG fitment center - (07) 3208 3022 - if further information is required.

Towbar Maintenance and Care:

It is recommended, when not in use, that the Tow Ball Mount assembly and class 4 Pin and Clip is stored inside the car away from moisture to prevent standing water from forming rust. Inspect to ensure, on regular basis, fasteners are torqued to the specifications below and in good condition.

Ensure that the fitting instructions are read and understood prior to fitment, Following the fitment place these instructions in the vehicle's glovebox after installation is completed.

Metric Bolt Torque Settings

Diameter	Pitch	Grade	Torque	Unit		Diameter	Pitch	Grade	Torque	Unit
M8	1.25	8.8	29	Nm		M12	1.25	10.9	125	Nm
M10	1.25	8.8	57	Nm		M12	1.50	10.9	105	Nm
M10	1.50	8.8	44	Nm		M14	1.25	10.9	195	Nm
M12	1.25	8.8	101	Nm		M14	1.50	10.9	165	Nm
M12	1.50	8.8	97	Nm		M16	1.25	10.9	295	Nm
M12	1.75	8.8	77	Nm		M16	1.50	10.9	250	Nm
M14	2.00	8.8	122	Nm		50mm Tow Ball	N/A	N/A	300	Nm
M16	2.00	8.8	190	Nm		70mm Tow Ball	N/A	N/A	750	Nm

Installation Instructions



Step 1: Prepare Bumper

- a. Under the rear of the bumper, remove the 3x phillips head screws fastening the outer skin to the inner structure. Retain the 2x outer screws.
- b. Remove the shipping hook on the passenger's side via 2x M14 bolts.
- c. On the driver's side, insert the inner chassis nut plate into the large hole located on the side of the chassis rearward of the Panhard rod mount. Align the nuts with the holes that mirror the passenger side shipping hook captive threads. See photo.

Note: Bend the inner chassis nut plate to suit the inner contour of the chassis rail. See photo.



Installation Instructions



Step 2: Cut Bumper

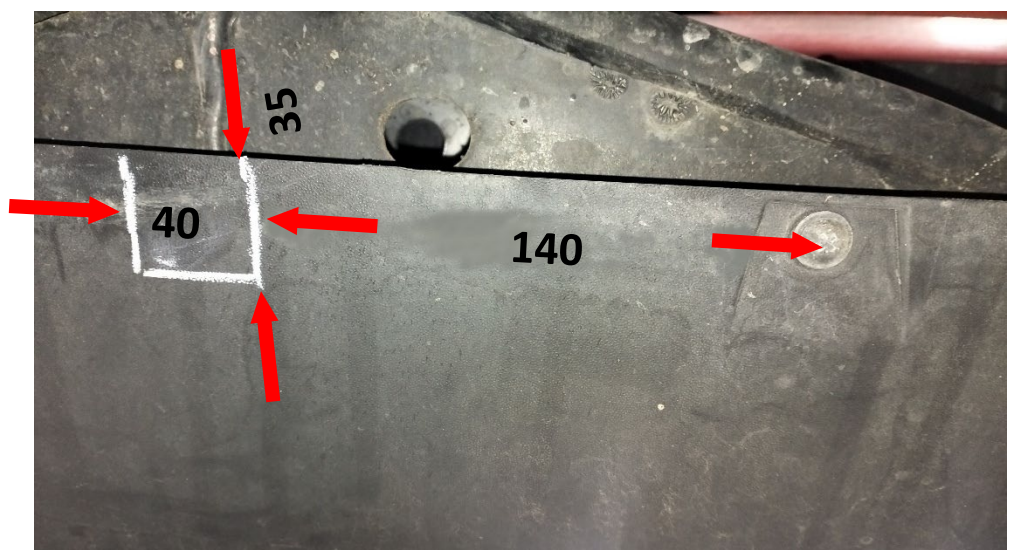
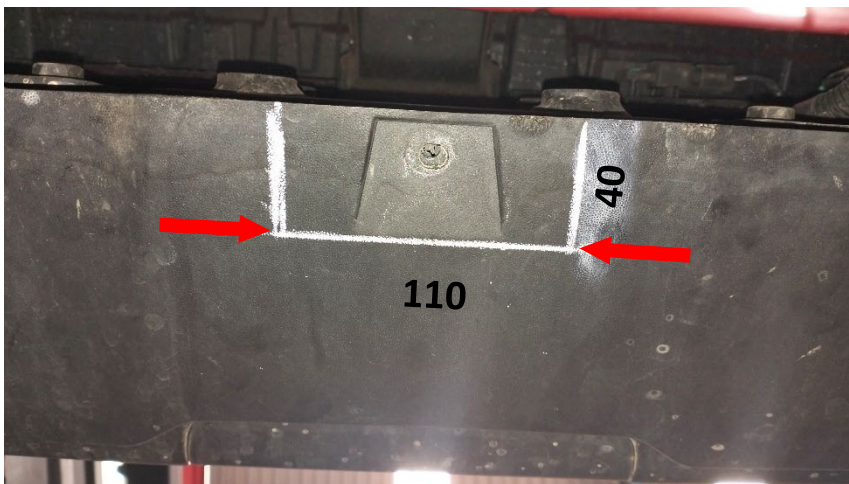
Note: The towbar installer is ultimately responsible for the location & quality of the bumper cut. To avoid mistakes, please use the following measurements as a guide only.

****Since the bumper cut-outs are quite insignificant and “out of sight”, the application of rubber pinch-weld around the cut edge is deemed optional, provided the cuts are neat and tidy. ****

- a. Establish the centre of the bumper.
- b. Mark the cut-out 110mm wide x 40mm deep from the bottom lip of the bumper. See photo.

Note: the outer bumper skin can be separated from the inner bumper mounting tab. When cutting, begin with the outer skin followed by completely removing the inner plastic bumper retainer tab.

- c. Use the outer phillips head screw hole on each side from step (1a) to mark the 2x outer bumper cuts. Measure 140mm and mark the bumper. Measure an extra 40mm for the outer cut. These cut-outs are 35mm deep from the edge of the bumper.
- d. Use an air saw or similar cutting device to neatly cut the bumper.
- e. De-burr all cut edges.



Step 3: Fit Towbar

- a. Lift the PS end plate up to the chassis and align with shipping hook captive threads. Loosely secure with 2 x M14 x 1.5 x 40 bolts.
- b. Lift the DS end plate up to the chassis and align with the previously installed internal chassis nut plate. **(Step 1c)**. Loosely secure with 2 x M14 x 1.5 x 40 bolts.
- c. Lift the main bar up to the end plates and loosely secure with 4 x M12 x 1.25 x 40 bolts with flat washers & nuts.
- d. Beginning at the chassis, tighten all fasteners to the torque specification on page 3.

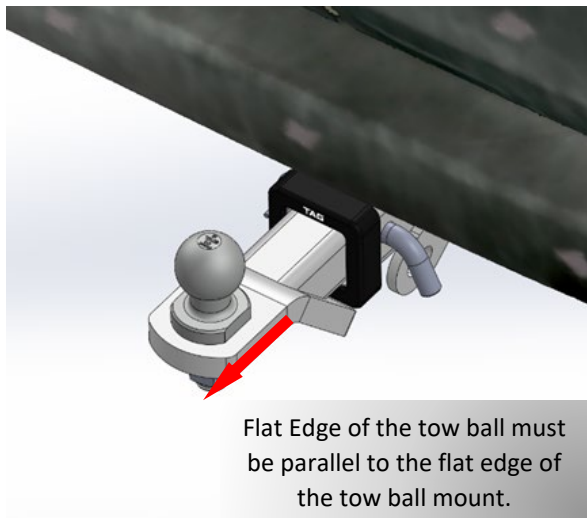


Installation Instructions



Step 4: Complete Towbar & Apply Spare Compliance Label

- a. Attach TAG Hitch cover with rubber mallet carefully to prevent breaking.
- b. Attach Tow ball to Ball Mount. The flat side of the tow ball **MUST BE** parallel to the outer edge of the ball mount. **Tighten the tow ball to 300Nm.**
- c. Insert the ball mount into the receiver and secure with the Pull pin and R-Clip. When not in use, secure the Ball Mount in a safe place inside your vehicle.
- d. Apply one of the compliance labels to the pillar of the driver's door. Place the remaining label and the fitting instructions in the vehicle handbook.



TAG Warranty Statement



SWD warrants your TAG Towbar for its full product life under the following conditions:

- You can show proof of purchase.
- The towbar has been correctly installed by a suitably qualified installer.
- The towbar has not been modified or abused in any way and has only been used for the purpose intended.
- The towbar was not fitted second hand to your vehicle.

The extent of this warranty includes materials and workmanship used in the manufacture of the towbar and is to the equivalent value of current, full replacement cost.

Nothing stated or implied in this warranty limits in any way, the statutory rights that you may have.

To make a claim visit the original installer in the first instance or, if you are unable to or are not satisfied with their help, then contact us direct by phone on 1300 669122 or visit www.swd.com.au.