

# Fitting Instructions



SKU

**T4G889**

PRODUCT

**TAG Heavy Duty Towbar  
for GWM Tank 300**

SPECIFICATIONS

- Towbar Class: CL 4 Heavy Duty
- Towing Capacity: 2000kg
- Tow ball Weight: 200kg
- Approx. Fitment Time: 30 Minutes



Scan for latest  
version of these  
instructions

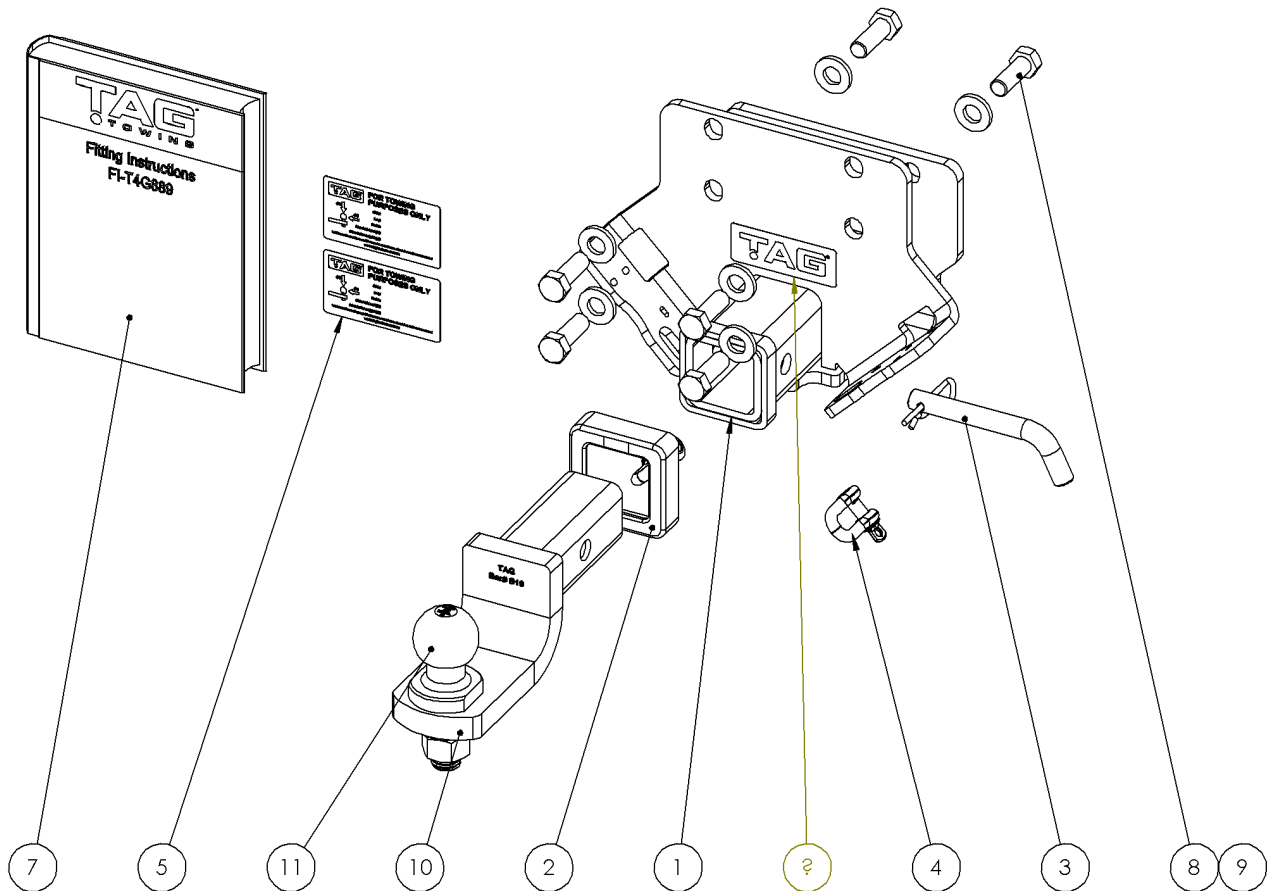
TOOLS REQUIRED

- Spanners
- Sockets
- Air Saw or similar.
- Trim Removal Tool
- Torque Wrench

IN THIS GUIDE

- Fitment Instructions
- Torque Settings
- Warranty Info

# Towbar Assembly



Item No.	Description	QTY.
1	Towbar Assembly	1
2	TAG Hitch Cover	1
3	Class 4 Pin & Clip	1
4	D-Shackle - 10mm. 1000kg, Carbon Steel	2
5	Compliance Label	3
6	TAG Sticker 100 x 40mm	1
7	Fitting Instruction	1
8	M14 x 1.5 x 40 Hex Set Screw	6
9	BM14 FLAT WASHER FLAT ROUND ZINC CLEAR	6
10	TAG Tow Ball Mount - L4120, 90° Face, 50mm Square Hitch	1
11	50mm TAG Tow Ball with Flat edge - Chrome (TAG Printed Box)	1

# Important Information



## Warning:

- This product is for towing purposes only and must only be loaded as shown in your vehicle Owner's Manual.
- This towbar is NOT to be drilled, cut, welded, or modified in any way.
- Check behind chassis rail and body panels before drilling to ensure no hazards are present.
- All load ratings shown are under the assumption your trailer has a functional braking system installed.
- When installed in positions other than the one depicted in these instructions the Tow Ball Mount may interfere or obstruct certain features of your vehicle (tailgate opening, Chassis clearance, etc.)

## General:

- Before fitting this towbar read fitting instructions and check installation hardware is correct.
- Check that the towbar is suitable for the vehicle and be wary of any changes to the vehicle design that may conflict with the fitting of this towbar. (Tray, Canopy, Suspension etc.)
- After drilling, blow any filings clear, remove any burrs and treat exposed metal with a rust inhibitor.
- The high tensile fasteners supplied with this product are an integral feature to achieving the specified rating, if replacement is required ensure that fasteners of the same grade (8.8) & quality are used. Contact an authorised TAG distributor or the TAG fitment center - (07) 3208 3022 - if further information is required.

## Towbar Maintenance and Care:

It is recommended, when not in use, that the Tow Ball Mount assembly and class 4 Pin and Clip is stored inside the car away from moisture to prevent standing water from forming rust. Inspect to ensure, on regular basis, fasteners are torqued to the specifications below and in good condition.

Ensure that the fitting instructions are read and understood prior to fitment, Following the fitment place these instructions in the vehicle's glovebox after installation is completed.

*Metric Bolt Torque Settings*

Diameter	Pitch	Grade	Torque	Unit		Diameter	Pitch	Grade	Torque	Unit
M8	1.25	8.8	29	Nm		M12	1.25	10.9	125	Nm
M10	1.25	8.8	57	Nm		M12	1.50	10.9	105	Nm
M10	1.50	8.8	44	Nm		M14	1.25	10.9	195	Nm
M12	1.25	8.8	101	Nm		M14	1.50	10.9	165	Nm
M12	1.50	8.8	97	Nm		M16	1.25	10.9	295	Nm
M12	1.75	8.8	77	Nm		M16	1.50	10.9	250	Nm
M14	2.00	8.8	122	Nm		50mm Tow Ball	N/A	N/A	300	Nm
M16	2.00	8.8	190	Nm		70mm Tow Ball	N/A	N/A	750	Nm

# Installation Instructions

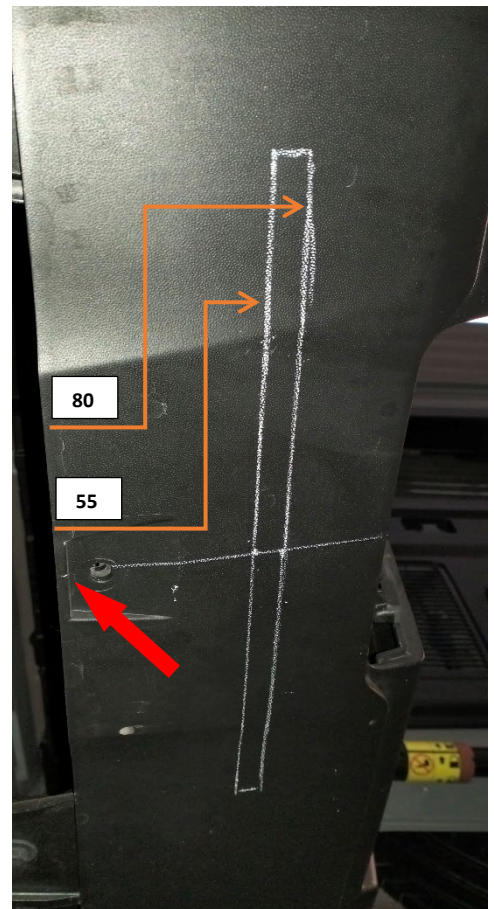
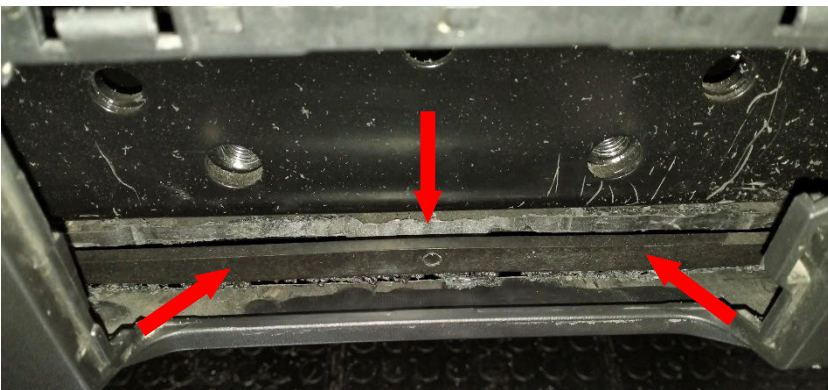


## Step 1: Cut Bumper

**Note:** The towbar installer is ultimately responsible for the location & quality of the bumper cut. To avoid mistakes, please use the following measurements as a guide only. We suggest making small incremental cuts and regularly test-fitting the bumper to ensure an accurate and tidy appearance. The additional application of rubber pinch-weld around the cut edge ensures a neat & tidy look.

- Remove the square central cover from the rear face of the bumper.
- From underneath, remove the centre phillips head screw from the bottom of the bumper and use the hole as a reference for marking the bumper.
- Use the bumper edge to create a centre line with a ruler. Move the end of the ruler slightly rearwards and against the small edge of the feature indent. Measure and mark points at 55mm & 80mm.
- Mark a line 150mm either side of the centerline (**300mm overall**) at both points ensuring that the ends are equal distances from the bumper edge and perpendicular to the centerline.
- Neatly** cut the outer layer of the bumper first. Use a 25mm hole saw at each end for a neat finish.
- Cut the inner plastic bumper skeleton using an air hacksaw or other suitable cutting device. Use the front of the inner rib (see note) as guide for cutting.
- De-burr all cut edges.

**Note:** Looking inside the small central bumper cavity you will notice a solid plastic rib running left to right just rearward of the chassis cross member face. The rear-most bumper cut (**80mm line**) should be on the front side (**toward engine**) of this rib. The towbar mounting plate (**with 4 holes**) will be between this rib and the vehicle crossmember.



---

## Step 2: Fit Towbar

---

- a. Re-install phillips head screw to the underside centre of bumper.
- b. Lift the bar up to the chassis cross member with the rear plate (**4 holes**) inserting through bumper cut.
- c. Align holes and loosely fasten with M14 x 1.5 x 40 bolts with flat washers.
- d. Once bolts have been inserted, tighten all according to the torque specification on page 3.
- e. Re-install the centre bumper cover.



---

## Step 4: Complete Towbar & Apply Spare Compliance Label

---

- a. Attach TAG Hitch cover with rubber mallet carefully to prevent breaking.
- a. Attach Tow ball to Ball Mount and slide into receiver. Secure with Pull pin and Clip if you are going to tow straight away. Alternatively, secure the Ball Mount in a safe place inside your vehicle.
- b. Apply one of the compliance labels to the pillar of the driver's door. Leave the remaining label and the fitting instructions in the vehicle handbook.



# TAG Warranty Statement



SWD warrants your TAG Towbar for its full product life under the following conditions:

- You can show proof of purchase.
- The towbar has been correctly installed by a suitably qualified installer.
- The towbar has not been modified or abused in any way and has only been used for the purpose intended.
- The towbar was not fitted second hand to your vehicle.

The extent of this warranty includes materials and workmanship used in the manufacture of the towbar and is to the equivalent value of current, full replacement cost.

Nothing stated or implied in this warranty limits in any way, the statutory rights that you may have.

To make a claim visit the original installer in the first instance or, if you are unable to or are not satisfied with their help, then contact us direct by phone on 1300 669122 or visit [www.swd.com.au](http://www.swd.com.au).