

Fitting Instructions



SKU

T4Z867

PRODUCT

**TAG Heavy Duty Towbar
for Hyundai Tucson (02/2021 - on)
(Excluding N-Line) & Kia Sportage
(09/2021-on).**

SPECIFICATIONS

- Towbar Class: CL 4 Heavy Duty
- Towing Capacity: 1900kg.
- Tow ball Weight: 190kg.
- Approx. Fitment Time: 60 Minutes



Scan for latest
version of these
instructions

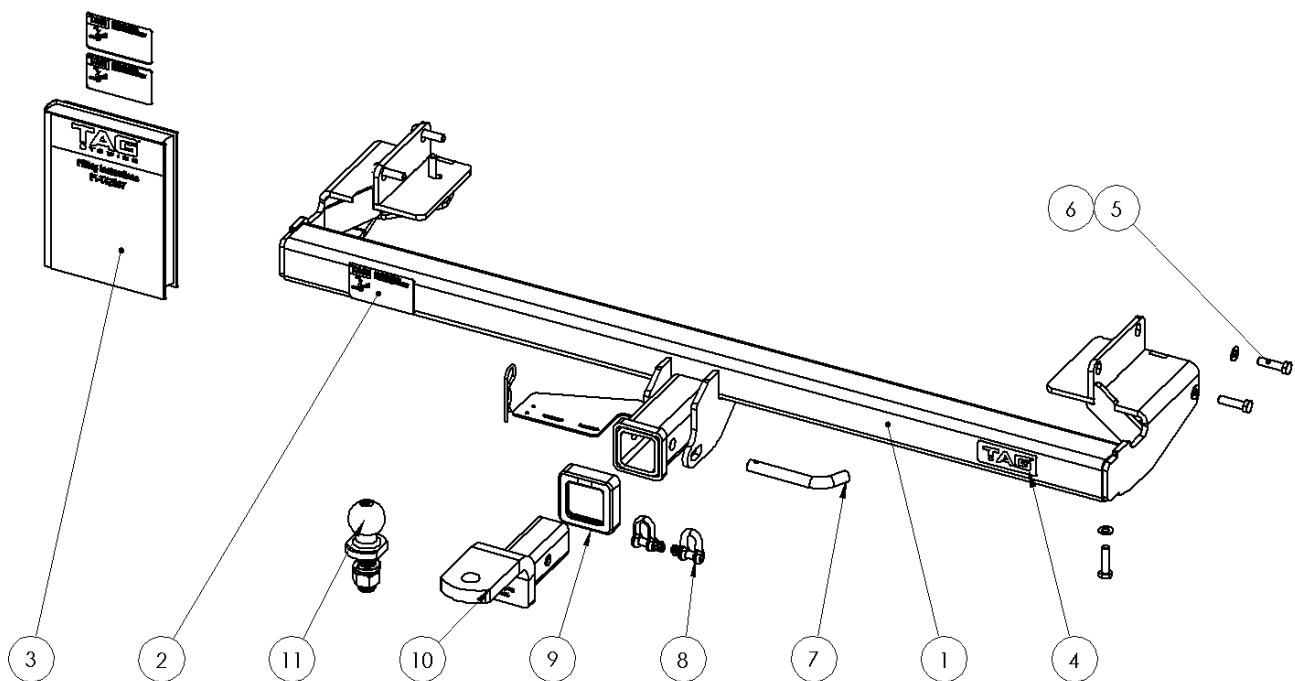
TOOLS REQUIRED

- Spanners
- Sockets
- Air Saw or similar.
- Trim Removal Tool
- Torque Wrench

IN THIS GUIDE

- Fitment Instructions
- Torque Settings
- Warranty Info

Towbar Assembly



Item No.	Description	QTY.	Item No.	Description	QTY.
1	Welded Main Bar Assembly	1	7	Class 4 Pin & Clip	1
2	TAG Compliance Sticker	3	8	D-Shackle - 10mm. 1000kg	2
3	Fitting Instruction	1	9	TAG Hitch Cover	1
4	TAG Sticker	1	10	TAG Tow Ball Mount - L4120	1
5	M10 X 40 X 1.25 Bolt	6	11	50mm Tow Ball - Chrome	1
6	M10 Flat Washer	6			

Important Information



Warning:

- This product is for towing purposes only and must only be loaded as shown in your vehicle Owner's Manual.
- This towbar is NOT to be drilled, cut, welded, or modified in any way.
- Check behind chassis rail and body panels before drilling to ensure no hazards are present.
- All load ratings shown are under the assumption your trailer has a functional braking system installed.
- When installed in positions other than the one depicted in these instructions the Tow Ball Mount may interfere or obstruct certain features of your vehicle (tailgate opening, Chassis clearance, etc.)

General:

- Before fitting this towbar read fitting instructions and check installation hardware is correct.
- Check that the towbar is suitable for the vehicle and be wary of any changes to the vehicle design that may conflict with the fitting of this towbar. (Tray, Canopy, Suspension etc.)
- After drilling, blow any filings clear, remove any burrs and treat exposed metal with a rust inhibitor.
- The high tensile fasteners supplied with this product are an integral feature to achieving the specified rating, if replacement is required ensure that fasteners of the same grade (8.8) & quality are used. Contact an authorised TAG distributor or the TAG fitment center - (07) 3208 3022 - if further information is required.

Towbar Maintenance and Care:

It is recommended, when not in use, the Tow Ball Mount assembly and class 4 Pin and Clip is stored inside the car away from moisture to prevent standing water from forming rust. Inspect to ensure, on regular basis, fasteners are torqued to the specifications below and in good condition.

Ensure that the fitting instructions are read and understood prior to fitment, Following the fitment place these instructions in the vehicle's glovebox after installation is completed.

Metric Bolt Torque Settings

Diameter	Pitch	Grade	Torque	Unit		Diameter	Pitch	Grade	Torque	Unit
M8	1.25	8.8	29	Nm		M12	1.25	10.9	125	Nm
M10	1.25	8.8	57	Nm		M12	1.50	10.9	105	Nm
M10	1.50	8.8	44	Nm		M14	1.25	10.9	195	Nm
M12	1.25	8.8	101	Nm		M14	1.50	10.9	165	Nm
M12	1.50	8.8	97	Nm		M16	1.25	10.9	295	Nm
M12	1.75	8.8	77	Nm		M16	1.50	10.9	250	Nm
M14	2.00	8.8	122	Nm		50mm Tow Ball	N/A	N/A	300	Nm
M16	2.00	8.8	190	Nm		70mm Tow Ball	N/A	N/A	750	Nm

Installation Instructions



Step 1: Remove Rear Bumper

Note: Crash bar is attached to bumper. Remove together. See point 'j' & figure 7.

- a. Open tailgate & remove cover from taillight assembly by inserting trim removal tool into small grooves closest to transparent section of taillight and release top & bottom. (Figure 1)
- b. Remove 2x screws and release taillight assembly' rearward. Disconnect harness. (Figure 2)
- c. Remove 2x scrivenets from the cavity. Repeat steps b-d on opposite side. (Figure 2)
- d. Remove the mudflap via 2 screws on the inside of the wheel arch and 1x scrivenet from the underside of the vehicle behind the mudflap. (Figure 3)
- e. Remove 1x screw from just above the mudflap in the wheel arch.
- f. Remove the two scrivenets from the plastic trim on the underside driver side behind the wheel and the 2x white push nuts to release the trim. (Figure 4)
- g. Carefully unclip the wheel arch trim from the bumper. (Figure 5)
- h. Repeat steps f-g on opposite side.

Note: Do not remove the wheel arch trims beyond the area where the bumper meets the body.

- i. At the bottom center of the bumper, remove 4x scrivenets fastening the plastic guard to the bumper. (Figure 6)
- j. From the underside of the vehicle on the rear body panel remove 2x M10 nuts per side fastening the crash bar. (Figure 7)
- k. Disconnect the sensor & reverse light harness on the passenger side before bumper removal. (Figure 8)
- l. With help, carefully flex out the wheel arch trim and release the bumper from the body being sure not to crease the trim. (Figure 9)
- m. Remove the bumper rearward.
- n. Remove the center plastic trim from the body via 3x plastic push nuts. (Figure 6)

Figure 1



Figure 2



Figure 3



Figure 4



Figure 5

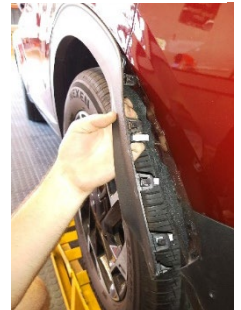


Figure 6



Figure 7



Figure 8



Figure 9



Step 2: Fit Towbar

- Lift bar assembly up to the chassis and loosely secure with 2 x M10 x 1.25 x 40 Bolts with flat washers to the side of the chassis.
- Loosely secure the bottom of the endplate to the chassis base with 1x M10 x 1.25 x 40 bolt with flat washer.
- Repeat on opposite side.
- Tighten all bolts to the torque specification (Pg2).

Step 3: Cut Bumper

Note: The towbar installer is ultimately responsible for the location & quality of the bumper cut. To avoid mistakes, please use the following measurements as a guide only. We suggest making small incremental cuts and regularly test fit the bumper to ensure an accurate and tidy appearance. The additional application of rubber pinch-weld around the cut edge ensures a neat & tidy look.

- Disconnect the kick sensor from the centre of the plastic crash bar.
- For **Tucson**, remove the crash bar from the bumper via (5x plastic scrivenets). Remove the stepped centre bumper mount from the crash bar via 1x phillips head screw. Cut the plastic center mount off the crash bar with an air saw or similar. (Figure 10).
- For **Sportage** remove the crash bar from the bumper via (2x scrivenets & 2x metal clips).
- From the inside of the bumper establish the centerline of the bumper and mark.
- Mark the bumper cut 45mm either side of centerline and then up 115mm. (Figure 11).
- Mark the splashguard 45mm either side of the center and then up to the 2nd raised rib near the base of the large centre raised section. (Figure 12).
- At each end of the splash guard mark in line with the straight edge and 90mm from the rear-most edge of the trim (Figure 13).
- Cut the bumper & splash guards with an air saw or similar. **Be careful of the boot kick-sensor when cutting.** Deburr all cut edges. Re-connect the kick sensor.
- Reinstall bumper in reverse of steps 1 a-n.
- Crash bar bolts can be accessed over the top of the towbar end plates with socket extensions.

Figure 10.



Figure 11.

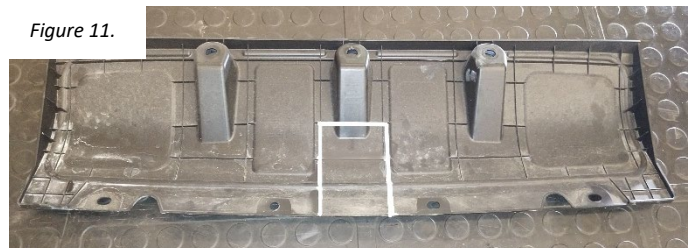


Figure 12.



Figure 13.



Installation Instructions



Step 4: Complete Towbar & Apply Spare Compliance Label

- a. Attach TAG Hitch cover with rubber mallet carefully to prevent breaking.
- b. Attach Tow ball to Ball Mount and slide hitch into towbar and secure with Pin and Clip if you are going to tow straight away, alternatively secure Ball Mount in a safe place inside your car.
- c. Attach Tow Ball to Ball Mount and torque to 350Nm.
- d. Apply one of the compliance labels to the pillar of the driver's door. Leave the remaining label and the fitting instructions in the vehicle handbook.



TAG Warranty Statement



SWD warrants your TAG Towbar for its full product life under the following conditions:

- You can show proof of purchase.
- The towbar has been correctly installed by a suitably qualified installer.
- The towbar has not been modified or abused in any way and has only been used for the purpose intended.
- The towbar was not fitted second hand to your vehicle.

The extent of this warranty includes materials and workmanship used in the manufacture of the towbar and is to the equivalent value of current, full replacement cost.

Nothing stated or implied in this warranty limits in any way, the statutory rights that you may have.

To make a claim visit the original installer in the first instance or, if you are unable to or are not satisfied with their help, then contact us direct by phone on 1300 669122 or visit www.swd.com.au.