

Fitting Instructions



SKU

TXR852

PRODUCT

**TAG 4x4 Recovery Towbar
for Nissan Patrol Y62 Wagon
(12/2012 - on)**

SPECIFICATIONS

- Towbar Class: CL 4 Heavy Duty
- Towing Capacity: 3500kg
- Tow ball Weight: 350kg
- Recovery WLL: 4000kg
- Approx. Fitment Time: 90 Minutes



Scan for latest
version of these
instructions

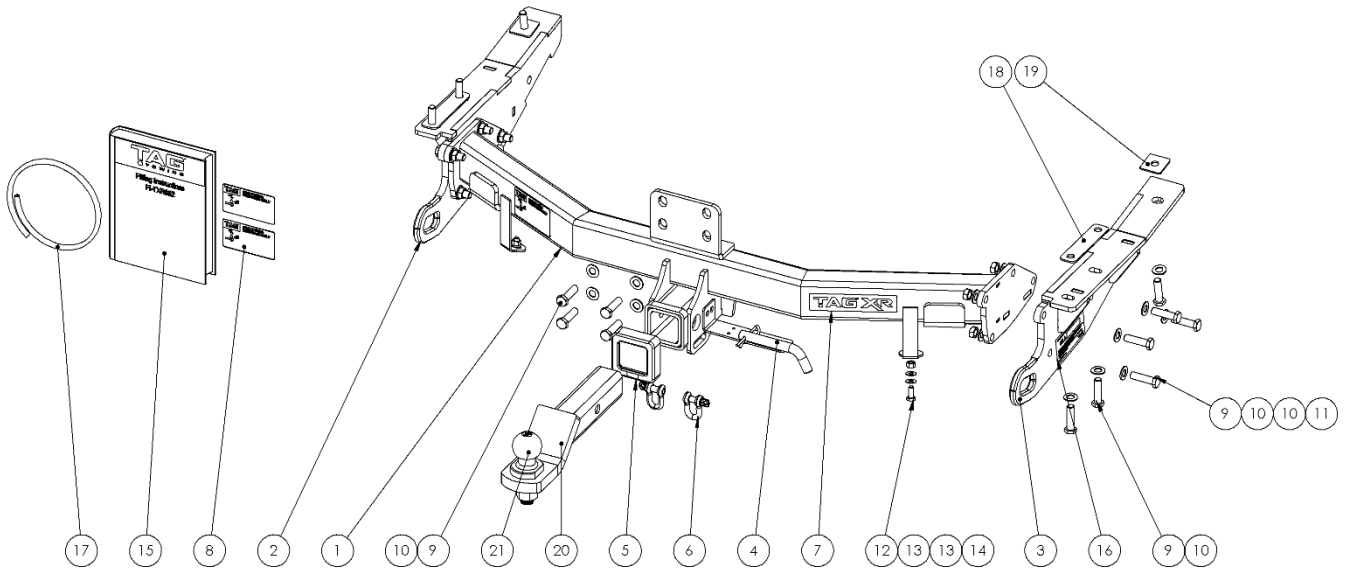
TOOLS REQUIRED

- Spanners
- Sockets
- Air Saw or similar.
- Trim Removal Tool
- Torque Wrench

IN THIS GUIDE

- Fitment Instructions
- Torque Settings
- Warranty Info

Towbar Assembly



Item No.	Description	QTY.	Item No.	Description	QTY.
1	TXR852 Centre Assembly	1	12	M8 x 1.25 x 20 Hex Set Screw	2
2	End Plate Assembly - PS	1	13	M8 Flat Washer	4
3	End Plate Assembly - DS	1	14	M8 1.25 Nut	2
4	Class 4 Pin & Clip	1	15	TXR852 Fitting Instruction	1
5	TAG Hitch Cover	1	16	Tag WLL Sticker (Blank)	1
6	D-Shackle - 10mm. 1000kg	2	17	Rubber Pinch-weld 600x7x12mm	1
7	TAG XR Sticker 150 x 33mm	1	18	Chassis Spacer	2
8	TAG Compliance Sticker	3	19	40x40x3 Single Hole 13mm Top Plate	2
9	M12 x 1.25 x 45 Bolt	18	20	L4045 Powder Coated TBM	1
10	M12 Flat Washer	26	21	50mm TAG Tow Ball - Zinc Plated	1
11	M12x1.25 Nut	8			

Important Information



Warning:

- This product is for towing purposes only and must only be loaded as shown in your vehicle Owner's Manual.
- This towbar is NOT to be drilled, cut, welded, or modified in any way.
- Check behind chassis rail and body panels before drilling to ensure no hazards are present.
- All load ratings shown are under the assumption your trailer has a functional braking system installed.
- When installed in positions other than the one depicted in these instructions the Tow Ball Mount may interfere or obstruct certain features of your vehicle (tailgate opening, Chassis clearance, etc.)

General:

- Before fitting this towbar read fitting instructions and check installation hardware is correct.
- Check that the towbar is suitable for the vehicle and be wary of any changes to the vehicle design that may conflict with the fitting of this towbar. (Tray, Canopy, Suspension etc.)
- After drilling, blow any filings clear, remove any burrs and treat exposed metal with a rust inhibitor.
- The high tensile fasteners supplied with this product are an integral feature to achieving the specified rating, if replacement is required ensure that fasteners of the same grade (8.8) & quality are used. Contact an authorised TAG distributor or the TAG fitment center - (07) 3208 3022 - if further information is required.

Towbar Maintenance and Care:

It is recommended, when not in use, the Tow Ball Mount assembly and class 4 Pin and Clip is stored inside the car away from moisture to prevent standing water from forming rust. Inspect to ensure, on regular basis, fasteners are torqued to the specifications below and in good condition.

Ensure that the fitting instructions are read and understood prior to fitment, Following the fitment place these instructions in the vehicle's glovebox after installation is completed.

Metric Bolt Torque Settings

Diameter	Pitch	Grade	Torque	Unit		Diameter	Pitch	Grade	Torque	Unit
M8	1.25	8.8	29	Nm		M12	1.25	10.9	125	Nm
M10	1.25	8.8	57	Nm		M12	1.50	10.9	105	Nm
M10	1.50	8.8	44	Nm		M14	1.25	10.9	195	Nm
M12	1.25	8.8	101	Nm		M14	1.50	10.9	165	Nm
M12	1.50	8.8	97	Nm		M16	1.25	10.9	295	Nm
M12	1.75	8.8	77	Nm		M16	1.50	10.9	250	Nm
M14	2.00	8.8	122	Nm		50mm Tow Ball	N/A	N/A	300	Nm
M16	2.00	8.8	190	Nm		70mm Tow Ball	N/A	N/A	750	Nm

Installation Instructions



Step 1: Remove Rear Bumper

- a. Lift the tailgate.
- b. Remove the plastic covers from the taillight.
- c. Remove 3x M6 bolts fastening the taillights and bumper.
- d. Remove taillights outward. Disconnect the harness.
- e. Remove the plastic scrivet from the cavity.
- f. Remove 6x torx head screws from the mudflap inside the wheel arch.
- g. Peel the wheel arch liner aside to reveal 1x vertical bolt fastening the bumper to the body.
- h. Remove 2x bolts rearward of the mudflap on the bottom edge of the bumper.
- i. Repeat steps 1a-h on opposite side. Retain all fasteners.
- j. Remove 2x bolts from the rearmost bumper retaining tabs.
- k. Remove and discard 2x splash guards attached to the bumper.
- l. Beginning at each wheel arch, gently peel the bumper away from the steel body and remove rearward.
- m. Disconnect the bumper harness.
- n. Keep the foam infills on the chassis/body in place.
- o. Remove and discard the towing hook and bumper retaining brackets from the chassis.



Installation Instructions



Step 2: Fit Towbar

- Beginning by loosely fastening the end plates with 1x M12x 1.25x 40 bolt into the forward-most hole of the chassis rail.
- Loosely fasten the rear of each end plate with the remaining M12x 1.25x 40 bolts.

Note: In some instances, the chassis crossmember has been welded with an overlap of the outer rail. 3mm packer plate (items 18 & 19) should be used in between the end plate & chassis rail to combat this issue. Please disregard the spacers if the end plates fit hard up against the chassis rail.

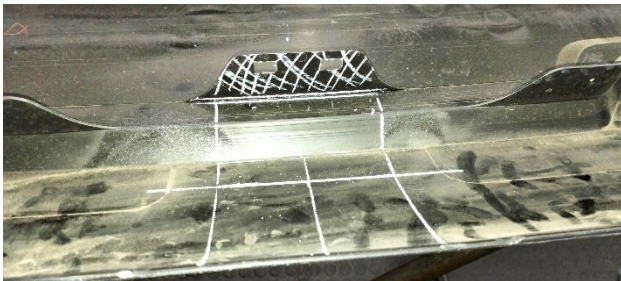
- Lift the towbar crossmember up and loosely fasten to the chassis centre with 4x M12x 1.25x 40 bolts.
- Align the towbar crossmember to the end plates and loosely fasten with the remaining M12x 1.25x 45 bolts to the end plates.



Step 3: Cut Bumper

Note: The towbar installer is ultimately responsible for the location & quality of the bumper cut. To avoid mistakes, please use the following measurements as a guide only. We suggest making small incremental cuts and regularly test-fit the bumper to ensure an accurate and tidy appearance. The additional application of rubber pinch-weld around the cut edge ensures a neat & tidy look.

- a. Establish the centre line of the bumper.
- b. Measure & mark the towbar receiver cut-out to be 90mm wide x 95mm deep from the bottom lip of the bumper.
- c. The horizontal fin inside the bumper & above the receiver cut-out must also be cut & removed.
- d. The RHS lower bumper requires to be cut to allow for the recovery point. Use the LHS equivalent as a guide, and mark and cut the bumper as shown.
- e. De-burr & apply rubber pinch-weld to all cut edges.
- f. Refit bumper in reverse of steps 1a-m.

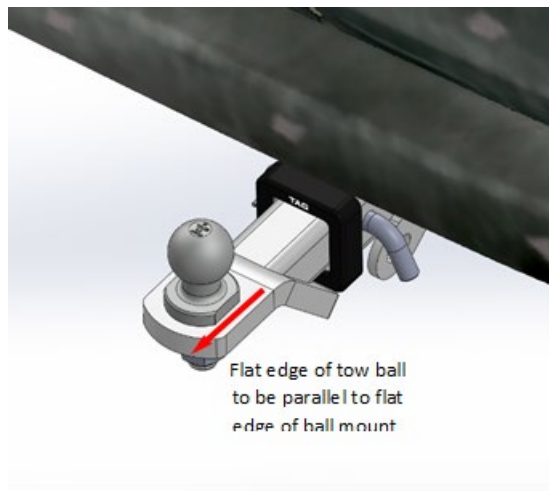


Installation Instructions



Step 4: Complete Towbar & Apply Spare Compliance Label

- a. Attach TAG Hitch cover with rubber mallet carefully to prevent breaking.
- b. Attach the tow ball to the ball mount. The flat side of the tow ball **MUST BE** parallel to the outer edge of the ball mount. **Tighten the tow ball to 300Nm.**
- c. Insert the ball mount into the receiver and secure with the Pull pin and R-Clip. When not in use, secure the Ball Mount in a safe place inside your vehicle.
- d. Apply one of the compliance labels to the pillar of the driver's door. Leave the remaining label and the fitting instructions in the vehicle handbook.



TAG Warranty Statement



SWD warrants your TAG Towbar for its full product life under the following conditions:

- You can show proof of purchase.
- The towbar has been correctly installed by a suitably qualified installer.
- The towbar has not been modified or abused in any way and has only been used for the purpose intended.
- The towbar was not fitted second hand to your vehicle.

The extent of this warranty includes materials and workmanship used in the manufacture of the towbar and is to the equivalent value of current, full replacement cost.

Nothing stated or implied in this warranty limits in any way, the statutory rights that you may have.

To make a claim visit the original installer in the first instance or, if you are unable to or are not satisfied with their help, then contact us direct by phone on 1300 669122 or visit www.swd.com.au.